

# CABA

BRIEFS

Summer 2024

2024

SPECIAL JUDICIAL EDITION





Stewart Tilghman  
Fox Bianchi & Cain P.A.

TRIAL LAWYERS ♦ FOUNDED 1984

INTEGRITY ♦ COMMITMENT ♦ RESULTS

PERSONAL INJURY | WRONGFUL DEATH  
MEDICAL MALPRACTICE | PRODUCT LIABILITY  
COMMERCIAL LITIGATION | HAZING AND MORE

One SE 3rd Avenue, Ste 3000 Miami, FL 33131

305.358.6644 | [www.stfblaw.com](http://www.stfblaw.com)

 @stfbc.law |  @stfbc\_law

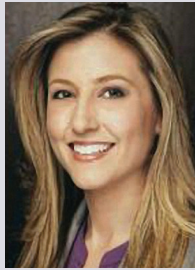


# 2024 CABA Board of Directors

## Executive Board



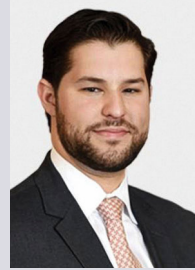
**PRESIDENT**  
Javier A. Ley-Soto  
General Counsel  
Miami Dade College



**PRESIDENT-ELECT**  
Amanda Fernandez  
Rivero Mestre LLP



**IMMEDIATE PAST  
PRESIDENT**  
Giselle Gutierrez  
Exhibit G Law Firm



**CO-VICE-PRESIDENT**  
Jordi Martinez-Cid  
Martinez-Cid Law



**CO-VICE-PRESIDENT**  
Haydee Sera  
Weiss Serota Helfman Cole  
& Bierman



**SECRETARY**  
Candice Balmori  
Weiss Serota Helfman  
Cole & Bierman



**TREASURER**  
Daniel Buigas  
Lamelas Law, P.A.

## Board of Directors



Diana Arteaga  
Coca-Cola Beverages  
Florida



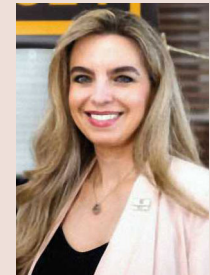
Emily K. Balter  
Bercow Radell Fernandez  
Larkin & Tapanes, PLLC



Gustavo J. Ceballos  
City of Coral Gables City  
Attorney's Office



Patrick Montoya  
Milberg



Isis Pacheco Velasco  
Interamerican Bank



Joshua Padron  
The Haggard Law Firm



Fabian Ruiz  
Gray Robinson



Augusto Perera  
Augusto Perera, P.A.

### SUMMER 2024

CABA Briefs is published by the Cuban American Bar Association, Inc. ("CABA"). CABA is a non-profit voluntary bar association founded in 1974 by lawyers of Cuban descent. CABA's members include judges, lawyers, and law students of all backgrounds interested in issues affecting the Cuban community, as well as broader legal and human rights issues impacting minority communities as a whole. CABA's mission is to promote equality of our members; increase diversity in the judiciary and legal community; serve the public interest by increasing awareness to the study of jurisprudence; foster respect for the law; preserve high standards of integrity, honor, and professional courtesy among our peers; provide equal access to and adequate representation of all minorities before the courts; facilitate the administration of justice; build close relationships among our members; provide mentoring and scholarship to law students nationally; and support the indigent community through the funding and administration of an effective pro bono legal assistance project and other community programs. Reproduction in part of any text, photograph, or illustration without written permission of the publisher is strictly prohibited. To submit an article for consideration or purchase an ad, please contact Emily Balter at [ebalter@brzoninglaw.com](mailto:ebalter@brzoninglaw.com).



# Table of CONTENTS

PRESIDENT'S  
MESSAGE 06

---

EDITOR-IN-CHIEF'S  
MESSAGE 07

---

JUDICIAL  
LUNCHEON 09

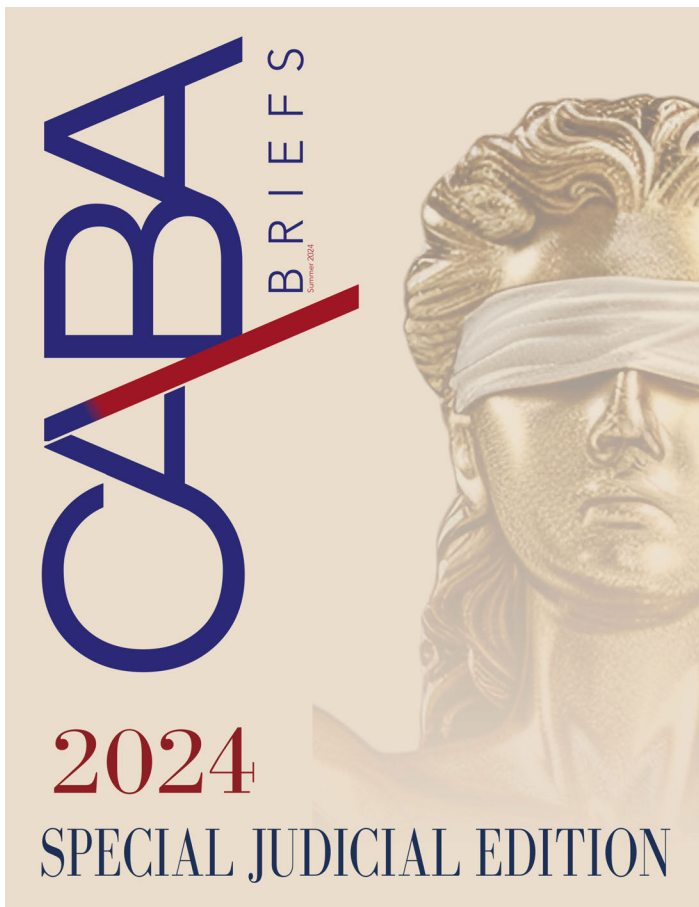
---

DONDE CRECE LA  
PALMA, FLORECEN  
LOS CÁNONES DE  
INTERPRETACIÓN  
DE LA LEY: *CONAGE*  
*V. UNITED STATES*  
AND FLORIDA'S USE  
OF THE CANONS OF  
STATUTORY  
CONSTRUCTION 12

---

THE 2024 CABA  
JUDICIAL POLL 15

---



Featured on the cover is  
**SPECIAL JUDICIAL EDITION**

## President's MESSAGE



Dear CABA Members:

The 2024 Election Cycle is upon us all. This period of time is when we gather, not just as individuals, but as a collective of informed citizens, committed to the foundational principles of our democracy. The integrity of our elections and the qualifications of those who seek to serve as judges are of paramount importance. It is our duty to scrutinize, to question, and to understand the values and the vision of each candidate, and importantly the candidates for our judiciary. CABA remains committed to promoting informed decision making for its members and the community.

It is with this commitment that CABA continues its tradition of hosting an annual Judicial Forum and Luncheon and publishing the Judicial edition of Briefs. The 2024 Judicial Forum and Luncheon provides us the opportunity to hear from each of the judicial candidates seeking your vote in the upcoming elections. This year we are also including in the Forum the candidates for the Clerk of the Court and Comptroller for Miami-Dade County. Lastly, we have invited the judicial candidates elected without opposition who will be new to the bench. This will be an incredible opportunity for us to hear from the future of Miami-Dade's judiciary and court system.

CABA is also publishing this 2024 Judicial Briefs. As in years past, the Judicial Briefs is the CABA publication dedicated to its Judicial Luncheon and Forum. The 2024 Judicial Briefs is unique as it is where CABA publishes the results of its Judicial Poll. This Poll is compiled from anonymous responses received from CABA's membership about the current Judicial Candidates as well as incumbent judges. The Poll asked CABA members to rate judicial candidates on the qualifications to be a judge, their character, and their treatment of Hispanics and others who could appear before them on the bench. Current judges include the additional rating categories which cover their duties and responsibilities as a judge. The CABA Judicial Poll seeks to provide its members and the community meaningful insight of our judiciary and those seeking judicial office.

In closing, I urge you to engage with the candidates and incumbents. Let us remember that the decisions they may one day make will affect the lives of many. Many in our community will turn to each of us as lawyers seeking our opinions on who to vote for in the upcoming elections. Let us approach this task with the seriousness it deserves, and let us do so with the confidence that comes from being informed and engaged members of the Florida Bar and CABA, and citizens of these United States.

Sincerely,



Javier A. Ley-Soto  
*CABA 2024 President*



## Editor-In-Chief's MESSAGE



Dear CABA Members:

It is a great privilege to present this Special Edition of CABA Briefs. With the upcoming judicial elections, our intent is to help our members become familiar with some of South Florida's judicial candidates. These esteemed individuals shape the legal landscape and improve our communities. As one of the pillars of democracy and to maintain public trust in the judiciary, these local judicial elections deserve the utmost respect and attention. These esteemed individuals shape the legal landscape.

This Special Issue includes an article by well-respected and long-time CABA supporter Judge Michael C. Baggé-Hernández of Hillsborough County Court and Elisabeth Laura Velázquez J.D. Candidate at Stetson University College of Law. The article examines the landmark case, *Conage v. United States*, 346 So.3d 594 (Fla. 2022). We are excited at the opportunity to work with Judge Baggé-

Hernández and Ms. Velázquez on this edition, and hope to continue to publishing thoughtful and thought provoking articles by our members.

Additionally, consistent with CABA's mission to foster respect for the law and facilitate the administration of justice, this Special Edition summarizes the results of CABA's Judicial Poll. The Judicial Poll is designed to educate our members on the qualifications of judicial candidates. Thank you to all that contributed and continue the commitment to civic participation. We hope this information will lead to engagement with the local judiciary and informed decisions this November.

I appreciate the support shown by our members and community who have contributed to this edition and look forward to working with you on our next edition.

Sincerely,

A handwritten signature in black ink that reads "Emily K. Balter". The signature is written in a cursive, flowing style.

Emily K. Balter

*Editor-in-Chief*

# THANK YOU CABA FOR STANDING WITH ISRAEL & THE JEWISH PEOPLE

**JUST AS YOU HAVE STOOD WITH US,  
WE STAND WITH YOU!**

The American Jewish Committee (AJC) extends our deepest gratitude to the Cuban American Bar Association (CABA) for your October 12, 2023, statement calling for the unequivocal condemnation of the terrorist attacks in Israel by Hamas on October 7th and for CABA's commitment in promoting justice, tolerance, and respect for human rights.

The Cuban and Jewish communities share a history of resilience in the face of oppression and a steadfast dedication to freedom and democracy. CABA's swift condemnation of these acts and your call for international action underscore the importance of standing united against terrorism.

**THANK YOU, Giselle Gutierrez, Miriam Soler Ramos, Javier A. Ley-Soto, Amanda Fernandez, Jordi Martinez-Cid, Haydee S. Sera, as well as CABA Directors: Amanda Demanda, Augusto Perera, Candice Balmori, Daniel Buigas, Diana Arteaga, Emily Balter, Gustavo J. Ceballos, Patrick Montoya, and to the entire CABA membership for your moral leadership and support.**



[www.ajc.org](http://www.ajc.org)

**Susan Greene Pallot**, President, Miami and Broward

**Brian Siegal**, Regional Director, Miami and Broward

**AJC MIAMI AND BROWARD EXECUTIVE COMMITTEE MEMBERS**

**Adam Hall | Ben Greenberg | Ben Moscovicz | Bernita King | Bobby Schatzman**

**Daniel Maland | Daniela Zanzuri Beiner | Gil Bonwitt | Jason Bloch**

**Jeffrey Eisenberg | John Bussel | Jonathan Raiffe | Laura Koffsky**

**Laurie Wynn | Pamela Berkowsky**

*AJC is the global advocacy organization for the Jewish people. AJC stands up for Israel's right to exist in peace and security; confronts antisemitism, no matter the source; and upholds the democratic values that unite Jews and our allies around the world. These values resonate deeply as part of AJC's stated mission since 1906.*



ELECTION DAY: TUESDAY, AUGUST 20, 2024

★ **Exceptional Trial Attorney:**

With over 30 years of experience, currently serving as a supervising attorney at the Law Offices of Carlos J. Martinez, Public Defender. Specializes in defending indigent individuals charged with criminal offenses, she is recognized for her commitment to fairness and justice.

★ **Extensive Legal Experience:**

Has tried hundreds of cases across criminal, civil, family, county, and juvenile courts. Former Assistant General Counsel for the Eleventh Judicial Circuit, providing valuable legal insights on complex cases.

★ **Community Leadership:**

Actively engaged in Miami-Dade community organizations as parliamentarian for the Brownsville Civic Neighborhood Association, board member of the Virginia Key Beach Park Trust, and founder of Education Means More Access (E.M.M.A.) for teen mothers. Also contributes as the past moderator of the Church of the Open Door and through media roles such as Managing Editor of the Miami Times and talk show host on WEDR 99 Jamz.

★ **Advocacy and Respect:**

Known for her principled advocacy and respected by clients, opposing counsel, and judges for her extensive courtroom expertise.

★ **Professional Affiliations:**

Member of the Wilkie D. Ferguson, Jr., Bar Association, Gwen S. Cherry Black Women Lawyers Association, and Florida Association of Criminal Defense Lawyers. Actively participates in The Florida Bar committees focusing on legal needs, diversity, and criminal procedure.

★ **Educational Background:**

Graduated from the University of Miami School of Law and the University of Florida College of Journalism, with a foundation laid at Miami Edison Senior High School. Demonstrates commitment to education and excellence in both legal practice and community service.

LEARN MORE AT: [WWW.BONITAJONESPEABODY.COM](http://WWW.BONITAJONESPEABODY.COM)

POLITICAL ADVERTISEMENT PAID FOR AND APPROVED BY THE COMMITTEE TO ELECT BONITA JONES-PEABODY FOR MIAMI-DADE COUNTY CIRCUIT COURT JUDGE, NON-PARTISAN



proudly supports  
the Cuban American Bar Association



COMPLEX LITIGATION | CLASS ACTIONS | HEALTHCARE | BANKRUPTCY  
2525 Ponce de Leon Blvd., 9th Floor, Coral Gables, FL 33134  
305.372.1800 | [www.kttlaw.com](http://www.kttlaw.com)





2024

JUDICIAL  
FORUM &  
LUNCHEON

FRIDAY, AUGUST 2

PROUDLY SPONSORED BY:

**akerman**

---

## **FRIDAY, AUGUST 2, 2024**

**THE RITZ-CARLTON KEY  
BISCAYNE  
455 Grand Bay Drive  
Key Biscayne, FL 33149**

**8:00 AM BREAKFAST & REGISTRATION**

**8:30 AM FROM ON HIGH: STANDARDS FOR  
PROFESSIONALISM AND ETHICS**

**9:30 AM TALES FROM TALLAHASSEE: PERSPECTIVES FROM  
FORMER GENERAL COUNSELS TO FLORIDA'S  
GOVERNORS**

**10:30 AM CONFERRING ABOUT THE NEW CONFERRAL  
RULES: UPDATES TO THE FLORIDA RULES**

**11:15 AM PRE-LUNCHEON NETWORKING**

**12:00 PM JUDICIAL LUNCHEON & CANDIDATE FORUM  
GRAND BALLROOM**

**2:00 PM WIND DOWN RECEPTION  
RUMBAR**



# 2024 JUDICIAL FORUM & LUNCHEON

## FROM ON HIGH: STANDARDS FOR PROFESSIONALISM AND ETHICS



**THE HONORABLE JOHN D. COURIEL**

FLORIDA SUPREME COURT JUSTICE



**ROLAND SANCHEZ-MEDINA, JR.**

FLORIDA BAR PRESIDENT



**JORGE L. PIEDRA**

FLORIDA BAR BOARD OF GOVERNORS; DISCIPLINARY REVIEW COMMITTEE, CHAIR

MODERATED BY:  
AMANDA FERNANDEZ  
MANAGING PARTNER  
RIVERO MESTRE



APPROVED BY THE FLORIDA BAR FOR CLE CREDIT

CLE sponsored by :





# 2024 JUDICIAL FORUM & LUNCHEON

## TALES FROM TALLAHASSEE: PERSPECTIVES FROM FORMER GENERAL COUNSELS TO FLORIDA'S GOVERNORS



**ROBERT H. FERNANDEZ**

MANAGING PARTNER  
RHF LAW FIRM



**RAQUEL "ROCKY" A. RODRIGUEZ**

SHAREHOLDER  
BUCHANAN INGERSOLL & ROONEY PC



**PAUL HUCK, JR.**

SHAREHOLDER  
LAWSON HUCK GONZALEZ, PLLC

**MODERATED BY:  
ROBERTO MARTINEZ  
PARTNER  
COLSON HICKS EIDSON**



**APPROVED BY THE FLORIDA BAR  
FOR CLE CREDIT**

CLE sponsored by :





# 2024 JUDICIAL FORUM & LUNCHEON

## CONFERRING ABOUT THE NEW CONFERRAL RULES: UPDATES TO THE FLORIDA RULES



**THE HONORABLE GINA BEOVIDES**

CIRCUIT JUDGE, FAMILY DIVISION, 11TH JUDICIAL CIRCUIT OF FLORIDA



**THE HONORABLE JOSE M. RODRIGUEZ**

ADMINISTRATIVE JUDGE, INTERNATIONAL COMMERCIAL ARBITRATION, CIRCUIT CIVIL DIVISION, 11TH JUDICIAL CIRCUIT OF FLORIDA



**THE HONORABLE LOURDES SIMON**

ADMINISTRATIVE JUDGE, CIRCUIT CIVIL DIVISION, 11TH JUDICIAL CIRCUIT OF FLORIDA

**MODERATED BY:  
PATRICK MONTOYA  
SENIOR PARTNER  
MILLBERG**



APPROVED BY THE FLORIDA BAR FOR CLE CREDIT

CLE sponsored by :



**SPECIALIZED INVESTIGATIONS CONSULTANTS**



# KEEP JUDGE CHRISTOPHER GREEN



FOR MIAMI-DADE COUNTY COURT JUDGE

ELECTION DAY: TUESDAY, AUGUST 20, 2024

## MEET JUDGE GREEN

### ✔ Experienced Legal Background

Judge Christopher Green, currently presiding over civil cases at South Dade Justice Center, brings substantial experience as a Senior Assistant City Attorney and Division Chief for litigation in Miami, where he supervised a team of trial and appellate lawyers.

### ✔ Dedicated Early Career to Public Defense

Starting his career at the Miami-Dade County Public Defender's Office, Judge Green defended a wide array of cases, from misdemeanors to first-degree felonies, demonstrating a deep commitment to justice and legal representation for all.

### ✔ Specialized Expertise in Civil Law

Certified as a specialist in civil trial law by the Florida Bar in 2010, Judge Green's credentials are backed by extensive jury trial experience and a rigorous certification process, setting him apart as part of an elite group where less than 7% of Florida Bar members achieve this distinction.

### ✔ Local Roots

Judge Green has called Miami home for more than 50 years and is a graduate of Christopher Columbus High School. He grew up in Miami and maintains strong community ties. He and his wife Elizabeth are the proud parents of four sons and have three grandchildren. Three of his four sons graduated from public high schools and earned their Eagle Scout rank in the Boy Scouts. His youngest son who is on the autism spectrum attends a public school dedicated to students with special needs.

### ✔ Recognized Leadership and Service

In 2021, Judge Green was honored by the Florida Bar for his meritorious service to the public and legal profession for his role as Chair of a Florida Bar Grievance Committee.



CIVIL TRIAL

[WWW.KEEPJUDGEGREEN.COM](http://WWW.KEEPJUDGEGREEN.COM)

Political advertisement paid for and approved by the Christopher Green Judicial Campaign. Approved by Judge Christopher Green.

# Donde Crece la Palma, Florecen los cánones de interpretación de la ley: *Conage v. United States* and Florida's Use of the Canons of Statutory Construction

By: Judge Michael C. Baggé-Hernández and Elisabeth Laura Velázquez

José Martí, the great Cuban poet, once wrote, “Liberty is the right of every man to be honest.” (“*La libertad es el derecho que tiene todo hombre a ser honesto.*”) The canons of statutory construction in American jurisprudence echo similar sentiments, as they serve as the intellectual underpinning for interpreting the law in a manner consistent with the statutory text. *Conage v. United States*, 346 So.3d 594 (Fla. 2022), introduces a paradigm shift that revitalizes these canons and sets a precedent for future jurisprudence. This article examines this landmark case, contextualizing it through textualism, Martí’s “Versos Sencillos,” and the canons of statutory construction.

## I. *Conage*: The Jurisprudential Revolution

The *Conage* decision has detonated the shackles of a century-old paradigm by allowing the judiciary unprecedented latitude in interpreting statutes. In *Conage*, the Court was tasked with interpreting the very definition of “purchase” with respect to Florida drug trafficking laws. By doing so, the Court made a bold move in discarding the long-standing “*Holly* principle,” which advocated for minimal judicial interpretation when statutory language appears “clear and unambiguous.” *Id.* at 598. Instead, the Court championed a more dynamic approach, suggesting that judges must consider “textual and structural clues” throughout

the statute. *Id.* This intellectual pivot set the stage for a nuanced three-layered scrutiny of the term “purchase,” turning each word and phrase into a clue in a grand legal puzzle. *Id.*

The Court’s groundbreaking ruling elegantly harmonized the terms “purchase” and “sale,” aligned them within the broader statutory context, and thus breathed new life into the art of statutory interpretation. *Id.* at 601-603. Far from a dry exercise, this holding serves as a compelling masterclass in legal interpretation. The ruling serves as a harbinger of potential shifts in legal paradigms across various jurisdictions within the United States.

## II. Historical Precedents: The Constrained Judiciary

To appreciate the significance of *Conage*, one must understand the historical limitations imposed on the judiciary’s interpretative latitude. Florida courts have rigorously adhered to a restraint-based paradigm since the early 20th century, as exemplified in *Holly v. Auld*, 450 So. 2d 217, 219 (Fla. 1984), and *A.R. Douglass, Inc. v. McRainey*, 137 So. 157, 159 (Fla. 1931). This paradigm has historically emphasized reserving the application of canons to instances where the statutory language was patently ambiguous. Subsequent case law, such as *Ross v. Gore*, 48 So. 2d 412, 415 (Fla. 1950), and *American Bankers Life Assurance Co. of Florida v.*

*Williams*, 212 So. 2d 777, 778 (Fla. 1st DCA 1968), further ossified this approach, rendering it axiomatic within Florida courts.

## III. The Difficulties with the *Holly* Approach:

From a textualist standpoint, waiting to deploy the canons of statutory construction until after a statute is deemed unambiguous undermines the very essence of textualism, which focuses on the objective interpretation of the statutory text based on its plain language at the time the statute was enacted. See Antonin Scalia & Bryan A. Garner, *Reading Law: The Interpretation of Legal Texts* § 6, at 69 (2012). Deploying these canons only after declaring a statute “unambiguous” presumes that the interpreter can conclusively discern ambiguity or clarity within the statute’s text. This approach invites the dangers of judicial subjectivity and inconsistency, as judges may vary in their intuition for what constitutes an “unambiguous” text.

Moreover, treating the canons as a secondary tool risks marginalizing their essential function in bringing coherence, consistency, and stability to statutory interpretation. Canons like “*eiusdem generis*” or “*noscitur a sociis*” help illuminate the text’s context, offering essential clues as to whether a statute is genuinely ambiguous. See *Conage*, 346 So. 3d at 598. They exist not merely to resolve ambiguities but to identify them in the first place. See *id.* By only invoking them after

a determination of ambiguity, the interpreter sidesteps a rigorous, systematic analysis and thereby risks missing the statute's true meaning, which is precisely the danger the *Conage* Court sought to remedy. *See id.* Therefore, from a textualist perspective, canons of construction should be applied in the initial stages of statutory interpretation to assess whether a law is ambiguous rather than being reserved for later stages. *See id.*

#### IV. *Conage* and Martí: Paths to Interpretive and Cultural Freedom

*Conage* liberated Florida courts from the *Holly* approach by offering interpretative freedom, parallel to Martí's call for cultural and political self-determination. The "Versos Sencillos" poem implicitly critiques any system that curtails the potential for nuanced understanding. His words offer a lens through which we might critique an overly restrictive approach to statutory construction: "I know how to name and class All the strange flowers that grow; I know every blade of grass, Fatal lie, and sublime woe." ("Yo sé los nombres extraños De las yerbas y las flores, Y de mortales engaños, Y de sublimes dolores".) Martí was acutely aware of life's complexities, just as *Conage* makes room for complexity by freeing judges from the restraints of a century-old paradigm.

The ruling in *Conage* allows for a nuanced approach, advocating for a broad understanding that comprises textual and structural clues and extends to contextual elements. It can be said that this case brings into the American legal system a method that resonates with Martí's concept of freedom and the liberty to construct meanings that are alive, dynamic, and sensitive to human complexities. As Martí wrote, "I have seen wings that were surging From beautiful women's shoulders, And seen butterflies emerging From the refuse heap that moulders." ("Alas nacer vi en los

hombros De las mujeres hermosas: Y salir de los escombros, Volando las mariposas".) Martí speaks of transformation, emerging from ruins as free entities. *Conage*, in its revolutionary approach to interpretation, too, offers a form of freedom—to law and, perhaps, to the people it serves.

#### V. Conclusion: Textualism, *Conage*, and Martí's Vision

*Conage v. United States* is not just a legal turning point, but a philosophical and cultural one. It nods to a form of expansive interpretation, much like the Cuban-American community that has been both a part of and apart from the narratives of both Cuba and the United States. Just as Martí's "Versos Sencillos" offers layered meanings about freedom and human dignity, *Conage* provides the judiciary with a tool for complex, legal interpretations. This ruling thus serves as a fulcrum on which the scales of American jurisprudence may well be rebalanced, aligning with a Cuban-American ethos deeply influenced by Martí's permanent ink.



**Elisabell Laura Velázquez** is a second-year law student at Stetson University College of Law. Elisabell is the Founder and President of CABA at Stetson Law and is also a member of the Stetson Law Dispute Resolution Board, Associate Editor for the Stetson Journal of Aging Law & Policy, Secretary of the Stetson Law Anti-Trafficking Coalition, Social Media Chair for the Florida Association for Women Lawyers at Stetson, and serves on the Networking Committee of the Entertainment & Sports Law Society at Stetson Law.



#### **Michael C. Baggé-Hernández**

serves as a County Court Judge in the Hillsborough County Court located in Hillsborough County, Florida. He was appointed by Gov. Ron DeSantis in 2019 and was elected without opposition in 2022. Prior to taking the bench, Judge Baggé-Hernández served for ten years as an Assistant United States Attorney, five years in the District of Puerto Rico and five years in the Middle District of Florida. During his tenure at the United States Attorney's Office, he prosecuted various cases, including transnational organized crime, high-seas crimes, narcotics crime, crimes related to the Immigration and Naturalization Acts, violent crime, white-collar crime, fraud, and money laundering, among others. Moreover, Judge Baggé-Hernández litigated civil and criminal asset forfeiture cases on behalf of the United States and represented the United States in federal appellate court. In 2018, the United States Department of Justice Organized Crime and Gang Section selected Judge Baggé-Hernández for a "first of its kind" detail as a Resident Legal Advisor to the United States Embassy in San Salvador, El Salvador. Before that, Judge Baggé-Hernández served as an Assistant State Attorney in Hillsborough County, Florida. As a native Spanish speaker, Judge Baggé-Hernández has participated in many trainings given by the US Department of Justice's Office of Overseas Prosecutorial Development, Assistance, and Training (OPDAT) and the American Bar Association's Rule of Law Initiative, which involved traveling throughout Latin America and training lawyers, law enforcement, judges, and law students whose countries are transitioning from the inquisitorial system to the accusatorial system. Additionally, he has participated in various lectures, trainings, and talks to judges, law enforcement, law students, and lawyers, on various law-related topics. Judge Baggé-Hernández graduated from Florida State University in 2003, with a degree in International Affairs and Spanish, and earned his Juris Doctor in 2007 from Stetson University College of Law.



# CHRIS/OPHER BENJAMIN

FOR MIAMI-DADE COUNTY JUDGE

GROUP #29



**THE EXPERIENCE WE  
NEED, AND THE  
DEDICATION WE DESERVE!**

***Vote for Christopher Benjamin for Miami-  
Dade County Judge on August 20, 2024***

#### **OUTSTANDING LAWYER**

With 22 years of experience, Christopher is an expert lawyer in Miami-Dade County, offering affordable services and recognized as one of the best lawyers by various legal publications.

#### **ARBITRATOR, HEARING OFFICER, AND SPECIAL MAGISTRATE**

With 15 years of experience, Christopher is a respected arbitrator known for his impartiality and legal expertise. He has served as a hearing officer and special magistrate in Miami-Dade County and South Florida, handling cases with integrity and fairness.

#### **VETERAN AND LEGISLATOR**

At 17 years old, during the Gulf War, Christopher postponed college to serve in the United States Army until 1994. In 2020, he ran for and served in the Florida House of Representatives until 2024.

#### **COMMUNITY LEADER**

Christopher is a dedicated community leader, volunteering in the Juvenile Court, providing pro bono representation, mentoring youth, and serving on regulatory and advisory boards. He has also led various bar associations and committees, demonstrating his commitment to serving his entire community.

ENDORSED AND SUPPORTED BY:



**PUNCH #  
314**



[www.BenjaminforJudge.com](http://www.BenjaminforJudge.com)

Pagado y aprobado por la campaña para elegir al Representante Christopher Benjamin como Juez del Condado de Miami-Dade Grupo #29

# 2024 CABA Judicial Poll

## Non-Incumbent Judicial Candidates in Contested Groups

<b>Is this Candidate qualified / competent to be a judge?</b>				
	<b>Exceptionally Qualified</b>	<b>Qualified</b>	<b>Unqualified</b>	<b>No Opinion</b>
Jason Edward Bloch	28.57%	37.66%	14.29%	19.48%
Bonita Jones-Peabody	9.09%	23.38%	19.48%	48.05%
Heloiza Correa	29.87%	38.96%	3.90%	27.27%
Cristobal David Padron	2.60%	15.58%	24.68%	57.14%
Christopher Benjamin	12.99%	36.36%	5.19%	45.45%
Scott Janowitz	28.57%	35.06%	7.79%	28.57%
Alina Salcines Restrepo	1.30%	19.48%	14.29%	64.94%
Rita Maria Baez	5.19%	14.29%	16.88%	63.64%
<b>Does this Candidate possess the appropriate character to sit as judge?</b>				
	<b>Yes</b>	<b>No</b>	<b>No Opinion</b>	
Jason Edward Bloch	61.04%	15.58%	23.38%	
Bonita Jones-Peabody	27.27%	20.78%	51.95%	
Heloiza Correa	63.64%	2.60%	33.77%	
Cristobal David Padron	19.48%	14.29%	66.23%	
Christopher Benjamin	53.25%	1.30%	45.45%	
Scott Janowitz	55.84%	10.39%	33.77%	
Alina Salcines Restrepo	19.48%	6.49%	74.03%	
Rita Maria Baez	14.29%	15.58%	70.13%	
<b>Does the Candidate treat Hispanics fairly and equitably?</b>				
	<b>Yes</b>	<b>No</b>	<b>No Opinion</b>	
Jason Edward Bloch	59.74%	6.49%	33.77%	
Bonita Jones-Peabody	27.27%	7.79%	64.94%	
Heloiza Correa	61.04%	2.60%	36.36%	
Cristobal David Padron	23.38%	2.60%	74.03%	
Christopher Benjamin	44.16%	1.30%	54.55%	
Scott Janowitz	55.84%	3.90%	40.26%	
Alina Salcines Restrepo	19.48%	3.90%	76.62%	
Rita Maria Baez	15.58%	2.60%	81.82%	
<b>Treats everyone equitably regardless of race, ethnicity, gender, religion, or sexual orientation?</b>				
	<b>Yes</b>	<b>No</b>	<b>No Opinion</b>	
Jason Edward Bloch	62.34%	6.49%	31.17%	
Bonita Jones-Peabody	29.87%	7.79%	62.34%	
Heloiza Correa	58.44%	2.60%	38.96%	
Cristobal David Padron	19.48%	5.19%	75.32%	
Christopher Benjamin	46.75%	1.30%	51.95%	
Scott Janowitz	53.25%	5.19%	41.56%	
Alina Salcines Restrepo	18.18%	2.60%	79.22%	
Rita Maria Baez	14.29%	3.90%	81.82%	

# 2024 CABA Judicial Poll

## Non-Incumbent Judicial Candidates in Uncontested Groups

<b>Is this Candidate qualified / competent to be a judge?</b>				
	Exceptionally Qualified	Qualified	Unqualified	No Opinion
Mariano Ariel Corcilli	12.99%	32.47%	1.30%	53.25%
Marie Elizabeth Mato	53.25%	27.27%	2.60%	16.88%
Michelle Marie Urbistondo	11.69%	22.08%	6.49%	59.74%
<b>Does this Candidate possess the appropriate character to sit as judge?</b>				
	Yes	No	No Opinion	
Mariano Ariel Corcilli	41.56%	2.60%	55.84%	
Marie Elizabeth Mato	77.92%	1.30%	20.78%	
Michelle Marie Urbistondo	35.06%	2.60%	62.34%	
<b>Does the Candidate treat Hispanics fairly and equitably?</b>				
	Yes	No	No Opinion	
Mariano Ariel Corcilli	37.66%	1.30%	61.04%	
Marie Elizabeth Mato	74.03%	1.30%	24.68%	
Michelle Marie Urbistondo	29.87%	1.30%	68.83%	
<b>Treats everyone equitably regardless of race, ethnicity, gender, religion, or sexual orientation?</b>				
	Yes	No	No Opinion	
Mariano Ariel Corcilli	35.06%	1.30%	63.64%	
Marie Elizabeth Mato	72.73%	1.30%	25.97%	
Michelle Marie Urbistondo	28.57%	1.30%	70.13%	

## Incumbents in Contested Group

<b>Is this Candidate qualified / competent to be a judge?</b>				
	Exceptionally Qualified	Yes	No	No Opinion
Christopher Green	44.16%	32.47%	2.60%	20.78%
<b>Does this Candidate possess the appropriate character to sit as judge?</b>				
	Yes	No	No Opinion	
Christopher Green	74.03%	2.60%	23.38%	
<b>Preparedness for Hearing?</b>				
	Exceptionally Qualified	Yes	No	No Opinion
Christopher Green	40.26%	18.18%	1.30%	40.26%
<b>Remote Court Operations?</b>				
	Exceptionally Qualified	Yes	No	No Opinion
Christopher Green	36.36%	16.88%	0.00%	46.75%
<b>Case Management?</b>				
	Exceptionally Qualified	Yes	No	No Opinion
Christopher Green	36.36%	16.88%	0.00%	46.75%
<b>Hearing Availability?</b>				
	Exceptionally Qualified	Yes	No	No Opinion
Christopher Green	36.36%	14.29%	0.00%	49.35%

# FORS

ATTORNEYS AT LAW

EST. 1982

A BUSINESS AND LITIGATION LAW FIRM



WWW.FORSLEGAL.COM

**TOP #2 TEN JURY VERDICTS OF 2007**  
A \$102.7 MILLION  
**\$102.7M in Florida negligent security case**

**Haggard Attorney Wins \$2.85M Settlement for Family That Was Attacked**  
December 4, 2015

**\$4 million to family of man assaulted in garage**

**FPL agrees to \$4M settlement in fatal car accident**

**The Miami Herald**  
SATURDAY, AUGUST 7, 2009  
**Pool drain victim wins \$104 million**  
Award is one of the largest in Fla.  
BY JAY WEAVER  
A North Miami teenager who suffered severe brain damage when his arm got stuck in a pool drain won a \$104 million judgment against the...

**She spent her last night at a motel. The motel owes her mother and father \$12 million.**

Personal Injury & Wrongful Death • Pool Drownings  
Negligent Security • Products Liability  
Liquor Liability • Road Construction



WE INVITE REFERRAL ATTORNEYS AND CO-COUNSEL  
TO CONTACT US: 305.446.5700 OR INFO@HAGGARDLAWFIRM.COM

# 2024 CABA Judicial Poll

<b>Timeliness of Rulings</b>				
	Exceptionally Qualified	Yes	No	No Opinion
Christopher Green	35.06%	15.58%	0.00%	49.35%
<b>Does the Candidate treat Hispanics fairly and equitably?</b>				
		Yes	No	No Opinion
Christopher Green		63.64%	1.30%	35.06%
<b>Treats everyone equitably regardless of race, ethnicity, gender, religion, or sexual orientation?</b>				
		Yes	No	No Opinion
Christopher Green		63.64%	0.00%	36.36%

## Incumbent Judicial Candidates in Uncontested Groups

<b>Is this Candidate qualified / competent to be a judge?</b>				
	Exceptionally Qualified	Qualified	Unqualified	No Opinion
Milena Abreu	35.00%	40.00%	0.00%	25.00%
Betsy Alvarez- Zane	43.90%	36.59%	2.44%	17.07%
Antonio Arzola	70.83%	20.83%	0.00%	8.33%
Christine Bandin	30.95%	47.62%	2.38%	19.05%
Michael G. Barket	35.00%	37.50%	5.00%	22.50%
Miguel M de la O	79.63%	11.11%	3.70%	5.56%
Victoria del Pino	53.49%	30.23%	6.98%	9.30%
Vivianne Del Rio	27.03%	48.65%	13.51%	10.81%
Jason Emilios Dimitris	61.36%	29.55%	2.27%	6.82%
Javier Enriquez	32.56%	44.19%	4.65%	18.60%
Ariana Fajardo Orshan	50.00%	34.78%	6.52%	8.70%
Jose L. Fernandez	40.00%	40.00%	2.50%	17.50%
Mindy S. Glazer	50.00%	30.95%	4.76%	14.29%
Gloria Gonzalez- Meyer	21.21%	42.42%	0.00%	36.36%
Diana Gonzalez- Whyte	8.82%	44.12%	14.71%	32.35%
Charles Kenneth Johnson	38.89%	44.44%	2.78%	13.89%
Lawrence D King	30.56%	41.67%	2.78%	25.00%
Carlos Lopez	37.84%	37.84%	10.81%	13.51%
Yara Lorenzo Klukas	46.51%	34.88%	0.00%	18.60%
Valerie R. Manno Schurr	25.64%	46.15%	17.95%	10.26%
Patricia Marino Pedraza	34.21%	44.74%	0.00%	21.05%
Yery Marrero	25.71%	37.14%	5.71%	31.43%
Lizzet Martinez	27.27%	42.42%	3.03%	27.27%
Kristy Nuñez	32.35%	44.12%	0.00%	23.53%
Maria D. Ortiz	28.57%	37.14%	5.71%	28.57%
Jorge Perez Santiago	38.89%	33.33%	0.00%	27.78%
Maria de Jesus Santovenia	35.90%	35.90%	12.82%	15.38%
Lourdes Simon	61.36%	29.55%	0.00%	9.09%
Linda Singer Stein	55.26%	31.58%	0.00%	13.16%

# 2024 CABA Judicial Poll

<b>Is this Candidate qualified / competent to be a judge?</b>				
	<b>Exceptionally Qualified</b>	<b>Qualified</b>	<b>Unqualified</b>	<b>No Opinion</b>
Eleane Sosa- Bruzon	40.00%	42.86%	0.00%	17.14%
Marisa Tinkler Mendez	55.56%	38.89%	0.00%	5.56%
Ellen S. Venzer	34.29%	42.86%	5.71%	17.14%
Maria Elena Verde	32.35%	41.18%	0.00%	26.47%
Diana Vizcaino	62.50%	32.50%	2.50%	2.50%
Lisa S. Walsh	78.26%	19.57%	0.00%	2.17%
Jacqueline Woodward	28.21%	33.33%	12.82%	25.64%
<b>Does this Candidate possess the appropriate character to sit as judge?</b>				
	<b>Yes</b>	<b>No</b>	<b>No Opinion</b>	
Milena Abreu	75.00%	0.00%	25.00%	
Betsy Alvarez- Zane	85.71%	2.86%	11.43%	
Antonio Arzola	90.24%	0.00%	9.76%	
Christine Bandin	73.53%	2.94%	23.53%	
Michael G. Barket	70.97%	9.68%	19.35%	
Miguel M de la O	93.62%	4.26%	2.13%	
Victoria del Pino	83.78%	5.41%	10.81%	
Vivianne Del Rio	74.19%	12.90%	12.90%	
Jason Emilios Dimitris	89.19%	2.70%	8.11%	
Javier Enriquez	78.79%	6.06%	15.15%	
Ariana Fajardo Orshan	86.84%	2.63%	10.53%	
Jose L. Fernandez	81.25%	3.13%	15.63%	
Mindy S. Glazer	91.18%	0.00%	8.82%	
Gloria Gonzalez- Meyer	70.37%	0.00%	29.63%	
Diana Gonzalez- Whyte	51.85%	14.81%	33.33%	
Charles Kenneth Johnson	83.33%	3.33%	13.33%	
Lawrence D King	75.86%	3.45%	20.69%	
Carlos Lopez	79.31%	6.90%	13.79%	
Yara Lorenzo Klukas	81.82%	0.00%	18.18%	
Valerie R. Manno Schurr	62.07%	27.59%	10.34%	
Patricia Marino Pedraza	81.48%	3.70%	14.81%	
Yery Marrero	62.50%	8.33%	29.17%	
Lizzet Martinez	72.73%	9.09%	18.18%	
Kristy Nuñez	76.00%	4.00%	20.00%	
Maria D. Ortiz	66.67%	8.33%	25.00%	
Jorge Perez Santiago	74.07%	0.00%	25.93%	
Maria de Jesus Santovenia	80.00%	16.67%	3.33%	
Lourdes Simon	93.94%	0.00%	6.06%	
Linda Singer Stein	89.66%	0.00%	10.34%	
Eleane Sosa- Bruzon	84.62%	3.85%	11.54%	

# 2024 CABA Judicial Poll

<b>Does this Candidate possess the appropriate character to sit as judge?</b>				
	Yes	No	No Opinion	
Marisa Tinkler Mendez	89.66%	3.45%	6.90%	
Ellen S. Venzer	80.00%	8.00%	12.00%	
Maria Elena Verde	73.08%	0.00%	26.92%	
Diana Vizcaino	93.75%	3.13%	3.13%	
Lisa S. Walsh	97.44%	0.00%	2.56%	
Jacqueline Woodward	62.07%	24.14%	13.79%	
<b>Preparedness for Hearing?</b>				
	Exceptionally Qualified	Qualified	Unqualified	No Opinion
Milena Abreu	33.33%	30.00%	0.00%	36.67%
Betsy Alvarez- Zane	30.77%	30.77%	7.69%	30.77%
Antonio Arzola	67.65%	14.71%	0.00%	17.65%
Christine Bandin	22.22%	29.63%	0.00%	48.15%
Michael G. Barket	30.77%	23.08%	7.69%	38.46%
Miguel M de la O	82.93%	7.32%	2.44%	7.32%
Victoria del Pino	55.17%	20.69%	6.90%	17.24%
Vivianne Del Rio	25.00%	25.00%	16.67%	33.33%
Jason Emilios Dimitris	58.06%	22.58%	0.00%	19.35%
Javier Enriquez	30.77%	30.77%	0.00%	38.46%
Ariana Fajardo Orshan	51.61%	25.81%	3.23%	19.35%
Jose L. Fernandez	44.44%	18.52%	3.70%	33.33%
Mindy S. Glazer	50.00%	17.86%	3.57%	28.57%
Gloria Gonzalez- Meyer	10.00%	40.00%	0.00%	50.00%
Diana Gonzalez- Whyte	4.76%	28.57%	23.81%	42.86%
Charles Kenneth Johnson	36.00%	32.00%	4.00%	28.00%
Lawrence D King	30.43%	26.09%	8.70%	34.78%
Carlos Lopez	40.74%	25.93%	11.11%	22.22%
Yara Lorenzo Klukas	44.44%	22.22%	3.70%	29.63%
Valerie R. Manno Schurr	25.00%	37.50%	20.83%	16.67%
Patricia Marino Pedraza	33.33%	33.33%	0.00%	33.33%
Yery Marrero	13.64%	31.82%	4.55%	50.00%
Lizzet Martinez	15.00%	40.00%	5.00%	40.00%
Kristy Nuñez	33.33%	33.33%	4.76%	28.57%
Maria D. Ortiz	20.00%	35.00%	10.00%	35.00%
Jorge Perez Santiago	43.48%	17.39%	0.00%	39.13%
Maria de Jesus Santovenia	30.77%	38.46%	19.23%	11.54%
Lourdes Simon	72.41%	17.24%	0.00%	10.34%
Linda Singer Stein	58.33%	25.00%	4.17%	12.50%
Eleane Sosa- Bruzon	35.00%	35.00%	5.00%	25.00%
Marisa Tinkler Mendez	56.00%	28.00%	0.00%	16.00%

# 2024 CABA Judicial Poll

<b>Preparedness for Hearing?</b>				
	<b>Exceptionally Qualified</b>	<b>Qualified</b>	<b>Unqualified</b>	<b>No Opinion</b>
Ellen S. Venzer	33.33%	38.10%	0.00%	28.57%
Maria Elena Verde	28.57%	33.33%	4.76%	33.33%
Diana Vizcaino	62.96%	29.63%	3.70%	3.70%
Lisa S. Walsh	84.85%	9.09%	0.00%	6.06%
Jacqueline Woodward	34.62%	19.23%	15.38%	30.77%
<b>Remote Court Operations?</b>				
	<b>Exceptionally Qualified</b>	<b>Qualified</b>	<b>Unqualified</b>	<b>No Opinion</b>
Milena Abreu	33.33%	23.33%	0.00%	43.33%
Betsy Alvarez- Zane	34.62%	23.08%	7.69%	34.62%
Antonio Arzola	66.67%	12.12%	0.00%	21.21%
Christine Bandin	22.22%	25.93%	0.00%	51.85%
Michael G. Barket	30.77%	19.23%	15.38%	34.62%
Miguel M de la O	77.50%	10.00%	0.00%	12.50%
Victoria del Pino	55.17%	13.79%	3.45%	27.59%
Vivianne Del Rio	26.09%	21.74%	13.04%	39.13%
Jason Emilius Dimitris	61.29%	16.13%	0.00%	22.58%
Javier Enriquez	26.92%	26.92%	0.00%	46.15%
Ariana Fajardo Orshan	45.16%	29.03%	3.23%	22.58%
Jose L. Fernandez	44.44%	14.81%	3.70%	37.04%
Mindy S. Glazer	51.85%	14.81%	0.00%	33.33%
Gloria Gonzalez- Meyer	10.00%	35.00%	5.00%	50.00%
Diana Gonzalez- Whyte	4.76%	28.57%	19.05%	47.62%
Charles Kenneth Johnson	36.00%	24.00%	8.00%	32.00%
Lawrence D King	30.43%	17.39%	4.35%	47.83%
Carlos Lopez	40.74%	14.81%	11.11%	33.33%
Yara Lorenzo Klukas	46.15%	19.23%	0.00%	34.62%
Valerie R. Manno Schurr	20.83%	37.50%	16.67%	25.00%
Patricia Marino Pedraza	33.33%	25.00%	0.00%	41.67%
Yery Marrero	13.64%	27.27%	4.55%	54.55%
Lizzet Martinez	15.00%	35.00%	0.00%	50.00%
Kristy Nuñez	33.33%	28.57%	4.76%	33.33%
Maria D. Ortiz	20.00%	25.00%	10.00%	45.00%
Jorge Perez Santiago	43.48%	13.04%	0.00%	43.48%
Maria de Jesus Santovenia	34.62%	30.77%	15.38%	19.23%
Lourdes Simon	68.97%	20.69%	0.00%	10.34%
Linda Singer Stein	54.17%	25.00%	0.00%	20.83%
Eleane Sosa- Bruzon	35.00%	25.00%	5.00%	35.00%
Marisa Tinkler Mendez	56.00%	24.00%	0.00%	20.00%
Ellen S. Venzer	33.33%	33.33%	0.00%	33.33%



# Thank You, Sponsors!

justice sponsor

**akerman**

supreme sponsor



W Y D L E R  
LAW

wind down sponsor



Stewart Tilghman  
Fox Bianchi & Cain P.A.  
TRIAL LAWYERS • FOUNDED 1984

appellate sponsors



KOZYAK TROPIN  
THROCKMORTON 40 YEARS



WEISS SEROTA  
HELPMAN COLE • BIERMAN

HUNTON  
ANDREWS KURTH



EPGD  
BUSINESS LAW

FORS  
ATTORNEYS AT LAW

OFFICE OF MIAMI-DADE COUNTY MAYOR DANIELLA LEVINE CAVA

trial sponsors

MARTÍNEZ-CID LAW



Mendez & Mendez  
LAW OFFICES

MM&H  
MARK MIGDAL & HAYDEN



PodhurstOrseck  
TRIAL & APPELLATE LAWYERS

Holland & Knight



DAY PITNEY LLP

Kels & Associates, P.A.  
Miami and Hollywood, FL



GUNSTER  
FLORIDA'S LAW FIRM FOR BUSINESS



BELL  
ROSQUETE  
REYES  
ESTEBAN



cle sponsors



# 2024 CABA Judicial Poll

<b>Remote Court Operations?</b>				
	<b>Exceptionally Qualified</b>	<b>Qualified</b>	<b>Unqualified</b>	<b>No Opinion</b>
Maria Elena Verde	28.57%	28.57%	0.00%	42.86%
Diana Vizcaino	59.26%	29.63%	0.00%	11.11%
Lisa S. Walsh	78.79%	12.12%	0.00%	9.09%
Jacqueline Woodward	30.77%	23.08%	11.54%	34.62%
<b>Case Management?</b>				
	<b>Exceptionally Qualified</b>	<b>Qualified</b>	<b>Unqualified</b>	<b>No Opinion</b>
Milena Abreu	36.67%	23.33%	3.33%	36.67%
Betsy Alvarez- Zane	26.92%	26.92%	11.54%	34.62%
Antonio Arzola	66.67%	15.15%	0.00%	18.18%
Christine Bandin	19.23%	34.62%	0.00%	46.15%
Michael G. Barket	32.00%	24.00%	8.00%	36.00%
Miguel M de la O	80.00%	10.00%	0.00%	10.00%
Victoria del Pino	55.17%	13.79%	6.90%	24.14%
Vivianne Del Rio	27.27%	22.73%	18.18%	31.82%
Jason Emilios Dimitris	58.06%	19.35%	0.00%	22.58%
Javier Enriquez	28.00%	32.00%	0.00%	40.00%
Ariana Fajardo Orshan	41.94%	35.48%	3.23%	19.35%
Jose L. Fernandez	46.15%	15.38%	3.85%	34.62%
Mindy S. Glazer	53.85%	15.38%	0.00%	30.77%
Gloria Gonzalez- Meyer	10.00%	35.00%	0.00%	55.00%
Diana Gonzalez- Whyte	5.00%	25.00%	25.00%	45.00%
Charles Kenneth Johnson	33.33%	33.33%	4.17%	29.17%
Lawrence D King	31.82%	22.73%	9.09%	36.36%
Carlos Lopez	40.74%	22.22%	11.11%	25.93%
Yara Lorenzo Klukas	48.00%	20.00%	4.00%	28.00%
Valerie R. Manno Schurr	21.74%	43.48%	26.09%	8.70%
Patricia Marino Pedraza	34.78%	30.43%	0.00%	34.78%
Yery Marrero	14.29%	33.33%	4.76%	47.62%
Lizzet Martinez	15.00%	40.00%	0.00%	45.00%
Kristy Nuñez	33.33%	33.33%	0.00%	33.33%
Maria D. Ortiz	21.05%	31.58%	10.53%	36.84%
Jorge Perez Santiago	45.45%	18.18%	0.00%	36.36%
María de Jesus Santovenia	30.77%	30.77%	23.08%	15.38%
Lourdes Simon	68.97%	17.24%	3.45%	10.34%
Linda Singer Stein	60.87%	21.74%	0.00%	17.39%
Eleane Sosa- Bruzon	35.00%	35.00%	0.00%	30.00%
Marisa Tinkler Mendez	58.33%	29.17%	0.00%	12.50%
Ellen S. Venzer	35.00%	35.00%	5.00%	25.00%
María Elena Verde	30.00%	30.00%	0.00%	40.00%

# 2024 CABA Judicial Poll

<b>Case Management?</b>				
	<b>Exceptionally Qualified</b>	<b>Qualified</b>	<b>Unqualified</b>	<b>No Opinion</b>
Diana Vizcaino	59.26%	29.63%	3.70%	7.41%
Lisa S. Walsh	75.76%	12.12%	0.00%	12.12%
Jacqueline Woodward	30.77%	19.23%	23.08%	26.92%
<b>Hearing Availability?</b>				
	<b>Exceptionally Qualified</b>	<b>Qualified</b>	<b>Unqualified</b>	<b>No Opinion</b>
Milena Abreu	36.67%	23.33%	0.00%	40.00%
Betsy Alvarez- Zane	26.92%	30.77%	7.69%	34.62%
Antonio Arzola	63.64%	18.18%	0.00%	18.18%
Christine Bandin	23.08%	30.77%	0.00%	46.15%
Michael G. Barket	32.00%	28.00%	4.00%	36.00%
Miguel M de la O	82.50%	7.50%	0.00%	10.00%
Victoria del Pino	55.17%	13.79%	6.90%	24.14%
Vivianne Del Rio	27.27%	27.27%	13.64%	31.82%
Jason Emilios Dimitris	58.06%	19.35%	0.00%	22.58%
Javier Enriquez	28.00%	32.00%	0.00%	40.00%
Ariana Fajardo Orshan	45.16%	29.03%	6.45%	19.35%
Jose L. Fernandez	46.15%	15.38%	3.85%	34.62%
Mindy S. Glazer	50.00%	19.23%	0.00%	30.77%
Gloria Gonzalez- Meyer	10.00%	35.00%	0.00%	55.00%
Diana Gonzalez- Whyte	5.26%	31.58%	15.79%	47.37%
Charles Kenneth Johnson	33.33%	33.33%	4.17%	29.17%
Lawrence D King	31.82%	22.73%	4.55%	40.91%
Carlos Lopez	42.31%	23.08%	7.69%	26.92%
Yara Lorenzo Klukas	48.00%	24.00%	0.00%	28.00%
Valerie R. Manno Schurr	21.74%	43.48%	17.39%	17.39%
Patricia Marino Pedraza	36.36%	27.27%	4.55%	31.82%
Yery Marrero	14.29%	38.10%	0.00%	47.62%
Lizzet Martinez	21.05%	36.84%	0.00%	42.11%
Kristy Nuñez	33.33%	33.33%	0.00%	33.33%
Maria D. Ortiz	21.05%	31.58%	10.53%	36.84%
Jorge Perez Santiago	45.45%	18.18%	0.00%	36.36%
Maria de Jesus Santovenia	30.77%	30.77%	19.23%	19.23%
Lourdes Simon	68.97%	17.24%	3.45%	10.34%
Linda Singer Stein	56.52%	26.09%	0.00%	17.39%
Eleane Sosa- Bruzon	35.00%	30.00%	5.00%	30.00%
Marisa Tinkler Mendez	58.33%	29.17%	0.00%	12.50%
Ellen S. Venzer	35.00%	35.00%	5.00%	25.00%
Maria Elena Verde	30.00%	30.00%	0.00%	40.00%
Diana Vizcaino	59.26%	33.33%	0.00%	7.41%

# 2024 CABA Judicial Poll

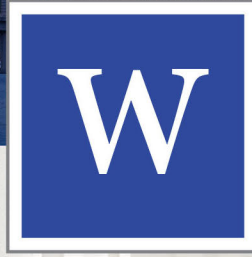
<b>Hearing Availability?</b>				
	<b>Exceptionally Qualified</b>	<b>Qualified</b>	<b>Unqualified</b>	<b>No Opinion</b>
Lisa S. Walsh	78.79%	12.12%	0.00%	9.09%
Jacqueline Woodward	30.77%	23.08%	15.38%	30.77%
<b>Timeliness of Rulings?</b>				
	<b>Exceptionally Qualified</b>	<b>Qualified</b>	<b>Unqualified</b>	<b>No Opinion</b>
Milena Abreu	39.13%	21.74%	0.00%	39.13%
Betsy Alvarez- Zane	27.27%	27.27%	13.64%	31.82%
Antonio Arzola	65.52%	10.34%	0.00%	24.14%
Christine Bandin	27.27%	22.73%	0.00%	50.00%
Michael G. Barket	33.33%	28.57%	4.76%	33.33%
Miguel M de la O	79.41%	8.82%	0.00%	11.76%
Victoria del Pino	60.00%	16.00%	0.00%	24.00%
Vivianne Del Rio	21.05%	21.05%	21.05%	36.84%
Jason Emilios Dimitris	59.26%	18.52%	3.70%	18.52%
Javier Enriquez	31.82%	31.82%	0.00%	36.36%
Ariana Fajardo Orshan	48.28%	31.03%	3.45%	17.24%
Jose L. Fernandez	43.48%	26.09%	0.00%	30.43%
Mindy S. Glazer	52.17%	21.74%	0.00%	26.09%
Gloria Gonzalez- Meyer	12.50%	31.25%	0.00%	56.25%
Diana Gonzalez- Whyte	0.00%	40.00%	6.67%	53.33%
Charles Kenneth Johnson	25.00%	35.00%	5.00%	35.00%
Lawrence D King	31.58%	26.32%	5.26%	36.84%
Carlos Lopez	41.67%	20.83%	12.50%	25.00%
Yara Lorenzo Klukas	50.00%	22.73%	4.55%	22.73%
Valerie R. Manno Schurr	19.05%	52.38%	14.29%	14.29%
Patricia Marino Pedraza	35.00%	30.00%	0.00%	35.00%
Yery Marrero	17.65%	35.29%	0.00%	47.06%
Lizzet Martinez	11.76%	41.18%	0.00%	47.06%
Kristy Nuñez	33.33%	33.33%	0.00%	33.33%
Maria D. Ortiz	11.76%	35.29%	11.76%	41.18%
Jorge Perez Santiago	45.00%	20.00%	0.00%	35.00%
Maria de Jesus Santovenia	26.09%	39.13%	17.39%	17.39%
Lourdes Simon	61.54%	23.08%	0.00%	15.38%
Linda Singer Stein	52.38%	33.33%	0.00%	14.29%
Eleane Sosa- Bruzon	38.89%	33.33%	0.00%	27.78%
Marisa Tinkler Mendez	57.14%	33.33%	0.00%	9.52%
Ellen S. Venzer	33.33%	38.89%	5.56%	22.22%
Maria Elena Verde	29.41%	35.29%	0.00%	35.29%
Diana Vizcaino	58.33%	33.33%	4.17%	4.17%
Lisa S. Walsh	70.97%	19.35%	3.23%	6.45%
Jacqueline Woodward	33.33%	20.83%	16.67%	29.17%

# 2024 CABA Judicial Poll

Does the Candidate treat Hispanics fairly and equitably?			
	Yes	No	No Opinion
Milena Abreu	63.64%	0.00%	36.36%
Betsy Alvarez- Zane	77.27%	0.00%	22.73%
Antonio Arzola	85.19%	0.00%	14.81%
Christine Bandin	61.11%	5.56%	33.33%
Michael G. Barket	66.67%	5.56%	27.78%
Miguel M de la O	93.33%	0.00%	6.67%
Victoria del Pino	83.33%	4.17%	12.50%
Vivianne Del Rio	82.35%	0.00%	17.65%
Jason Emilios Dimitris	84.00%	4.00%	12.00%
Javier Enriquez	80.00%	0.00%	20.00%
Ariana Fajardo Orshan	85.71%	3.57%	10.71%
Jose L. Fernandez	90.48%	0.00%	9.52%
Mindy S. Glazer	86.96%	0.00%	13.04%
Gloria Gonzalez- Meyer	66.67%	0.00%	33.33%
Diana Gonzalez- Whyte	57.14%	0.00%	42.86%
Charles Kenneth Johnson	77.78%	5.56%	16.67%
Lawrence D King	70.59%	0.00%	29.41%
Carlos Lopez	80.00%	5.00%	15.00%
Yara Lorenzo Klukas	81.82%	4.55%	13.64%
Valerie R. Manno Schurr	75.00%	10.00%	15.00%
Patricia Marino Pedraza	83.33%	0.00%	16.67%
Yery Marrero	60.00%	6.67%	33.33%
Lizzet Martinez	80.00%	0.00%	20.00%
Kristy Nuñez	76.47%	0.00%	23.53%
Maria D. Ortiz	68.75%	6.25%	25.00%
Jorge Perez Santiago	77.78%	0.00%	22.22%
Maria de Jesus Santovenia	85.00%	5.00%	10.00%
Lourdes Simon	91.30%	0.00%	8.70%
Linda Singer Stein	94.74%	0.00%	5.26%
Eleana Sosa- Bruzon	82.35%	5.88%	11.76%
Marisa Tinkler Mendez	100.00%	0.00%	0.00%
Ellen S. Venzer	87.50%	6.25%	6.25%
Maria Elena Verde	86.67%	0.00%	13.33%
Diana Vizcaino	95.65%	4.35%	0.00%
Lisa S. Walsh	96.43%	0.00%	3.57%
Jacqueline Woodward	72.73%	9.09%	18.18%

# 2024 CABA Judicial Poll

<b>Treats everyone equitably regardless of race, ethnicity, gender, religion, or sexual orientation?</b>			
	<b>Yes</b>	<b>No</b>	<b>No Opinion</b>
Milena Abreu	63.64%	0.00%	36.36%
Betsy Alvarez- Zane	72.73%	0.00%	27.27%
Antonio Arzola	85.19%	0.00%	14.81%
Christine Bandin	61.11%	5.56%	33.33%
Michael G. Barket	66.67%	5.56%	27.78%
Miguel M de la O	93.33%	0.00%	6.67%
Victoria del Pino	83.33%	4.17%	12.50%
Vivianne Del Rio	82.35%	0.00%	17.65%
Jason Emilios Dimitris	84.00%	4.00%	12.00%
Javier Enriquez	80.00%	0.00%	20.00%
Ariana Fajardo Orshan	82.14%	3.57%	14.29%
Jose L. Fernandez	85.71%	0.00%	14.29%
Mindy S. Glazer	86.96%	0.00%	13.04%
Gloria Gonzalez- Meyer	66.67%	0.00%	33.33%
Diana Gonzalez- Whyte	57.14%	0.00%	42.86%
Charles Kenneth Johnson	77.78%	0.00%	22.22%
Lawrence D King	70.59%	0.00%	29.41%
Carlos Lopez	80.95%	0.00%	19.05%
Yara Lorenzo Klukas	86.36%	0.00%	13.64%
Valerie R. Manno Schurr	75.00%	10.00%	15.00%
Patricia Marino Pedraza	82.35%	0.00%	17.65%
Yery Marrero	66.67%	0.00%	33.33%
Lizzet Martinez	73.33%	0.00%	26.67%
Kristy Nuñez	77.78%	5.56%	16.67%
Maria D. Ortiz	64.71%	0.00%	35.29%
Jorge Perez Santiago	77.78%	0.00%	22.22%
Maria de Jesus Santovenia	85.00%	5.00%	10.00%
Lourdes Simon	91.30%	4.35%	4.35%
Linda Singer Stein	94.74%	0.00%	5.26%
Eleane Sosa- Bruzon	82.35%	5.88%	11.76%
Marisa Tinkler Mendez	100.00%	0.00%	0.00%
Ellen S. Venzer	87.50%	6.25%	6.25%
Maria Elena Verde	86.67%	0.00%	13.33%
Diana Vizcaino	95.65%	4.35%	0.00%
Lisa S. Walsh	96.43%	0.00%	3.57%
Jacqueline Woodward	72.73%	4.55%	22.73%



W Y D L E R  
LAW

Our firm is proud to support the Cuban American Bar Association's mission to promote equality for its members and increase diversity in the judiciary.

---

*Wydler Law is a civil defense firm committed to diversity with Cuban-American heritage.*

NAMWOLF  
LAW FIRM MEMBER



# 2024 CABA Judicial Poll

## Current Judges

Is this Candidate qualified / competent to be a judge?				
	Exceptionally Qualified	Qualified	Unqualified	No Opinion
William Altfield	66.67%	28.21%	0.00%	5.13%
Barbara Areces	58.06%	32.26%	3.23%	6.45%
Ramiro C. Areces	54.55%	36.36%	3.03%	6.06%
Jennifer Azar	9.52%	28.57%	0.00%	61.90%
Marcus Bach Armas	37.04%	40.74%	3.70%	18.52%
Michelle Alvarez Barakat	51.72%	37.93%	3.45%	6.90%
Gina Beovides	81.40%	13.95%	4.65%	0.00%
Scott M. Bernstein	63.64%	27.27%	6.06%	3.03%
Tanya Brinkley	53.33%	40.00%	0.00%	6.67%
Beatrice Butchko	45.95%	35.14%	13.51%	5.41%
Marcia B. Caballero	51.85%	33.33%	0.00%	14.81%
Carmen Cabarga	30.77%	30.77%	11.54%	26.92%
Donald "DJ" Cannava	62.96%	29.63%	0.00%	7.41%
Betty Capote	42.86%	46.43%	3.57%	7.14%
Yvonne Colodny	40.00%	43.33%	0.00%	16.67%
Laura Shearon Cruz	42.86%	42.86%	0.00%	14.29%
Raul Cuervo	45.83%	33.33%	0.00%	20.83%
Ivonne Cuesta	45.45%	42.42%	6.06%	6.06%
Jorge E. Cueto	59.46%	24.32%	5.41%	10.81%
Abby Cynamon	57.58%	36.36%	0.00%	6.06%
Miesha Darrough	33.33%	45.83%	0.00%	20.83%
Lissette De La Rosa	27.27%	36.36%	0.00%	36.36%
Marcia Del Rey	20.00%	23.33%	43.33%	13.33%
Michelle Delancy	44.44%	37.04%	0.00%	18.52%
Dawn Denaro	46.15%	38.46%	7.69%	7.69%
Reemberto Diaz	64.71%	32.35%	2.94%	0.00%
Veronica Diaz	34.48%	34.48%	20.69%	10.34%
Christina Marie DiRaimondo	58.62%	27.59%	0.00%	13.79%
Pedro P. Echarte Jr	30.30%	45.45%	12.12%	12.12%
Spencer Eig	25.00%	46.43%	17.86%	10.71%
Elisabeth Espinosa	44.00%	36.00%	4.00%	16.00%
Robin Faber	24.00%	44.00%	8.00%	24.00%
Marlene Fernandez-Karavetsos	42.31%	38.46%	3.85%	15.38%
Victoria Ferrer	42.31%	42.31%	0.00%	15.38%
Carlos Gamez	51.85%	37.04%	0.00%	11.11%
Alicia Garcia Priovolos	40.74%	40.74%	11.11%	7.41%
Stacy D. Glick	40.74%	40.74%	7.41%	11.11%
Ritamaria Gonzalez Cuervo	23.81%	57.14%	0.00%	19.05%
Laura Maria Gonzalez- Marques	36.36%	36.36%	0.00%	27.27%
Michaelle Gonzalez- Paulson	56.00%	32.00%	0.00%	12.00%
Carlos Guzman	56.25%	28.13%	12.50%	3.13%
Ayana Harris	37.50%	45.83%	0.00%	16.67%
Christine Hernandez	46.43%	32.14%	0.00%	21.43%
Richard Hersch	58.06%	32.26%	3.23%	6.45%
Milton Hirsch	51.52%	36.36%	6.06%	6.06%
Chiaka Ihekwa	48.28%	34.48%	6.90%	10.34%
Zachary N. James	62.07%	27.59%	0.00%	10.34%
Lody Jean	66.67%	33.33%	0.00%	0.00%



# 2024 CABA Judicial Poll

<b>Is this Candidate qualified / competent to be a judge?</b>				
	<b>Exceptionally Qualified</b>	<b>Qualified</b>	<b>Unqualified</b>	<b>No Opinion</b>
Carroll J. Kelly	64.71%	32.35%	0.00%	2.94%
Myriam Lehr	55.17%	34.48%	3.45%	6.90%
Steve Leifman	63.33%	33.33%	0.00%	3.33%
Peter R. Lopez	75.76%	18.18%	0.00%	6.06%
Denise Martinez- Scanziani	55.56%	18.52%	11.11%	14.81%
Linda Melendez	38.10%	38.10%	0.00%	23.81%
Alberto Milian	40.74%	33.33%	11.11%	14.81%
David C. Miller	25.81%	48.39%	22.58%	3.23%
Cristina Miranda	42.31%	38.46%	3.85%	15.38%
Natalie Moore	40.91%	31.82%	0.00%	27.27%
Spencer Multack	56.25%	34.38%	0.00%	9.38%
Gordon Murray	44.83%	41.38%	3.45%	10.34%
Julie H. Nelson	35.00%	35.00%	5.00%	25.00%
Luis Perez- Medina	39.13%	39.13%	4.35%	17.39%
Joseph Perkins	9.09%	54.55%	18.18%	18.18%
Teresa Pooler	34.62%	50.00%	0.00%	15.38%
Orlando A. Prescott	62.96%	33.33%	0.00%	3.70%
Thomas J. Rebull	70.59%	26.47%	0.00%	2.94%
Jason Reding Quiñones	9.09%	13.64%	13.64%	63.64%
Cristina Rivera Correa	38.46%	46.15%	7.69%	7.69%
Ariel Rodriguez	29.17%	41.67%	4.17%	25.00%
Jose M. Rodriguez	52.94%	38.24%	2.94%	5.88%
Oscar Rodriguez- Fonts	35.48%	35.48%	12.90%	16.13%
Samantha Ruiz Cohen	62.07%	31.03%	0.00%	6.90%
Mavel Ruiz	33.33%	56.67%	3.33%	6.67%
Migna Sanchez- Llorens	43.33%	43.33%	6.67%	6.67%
George A. Sarduy	34.48%	41.38%	13.79%	10.34%
Stephanie Silver	55.56%	25.93%	7.41%	11.11%
Bertila Soto	83.33%	16.67%	0.00%	0.00%
Laura Anne Stuzin	55.56%	33.33%	3.70%	7.41%
Daryl E. Trawick	48.15%	37.04%	3.70%	11.11%
Robert T. Watson	52.94%	35.29%	5.88%	5.88%
Andrea R. Wolfson	71.43%	25.71%	0.00%	2.86%
David Young	48.48%	33.33%	15.15%	3.03%
Angélica D. Zayas	42.31%	38.46%	0.00%	19.23%

<b>Does this Candidate possess the appropriate character to sit as judge?</b>			
	<b>Yes</b>	<b>No</b>	<b>No Opinion</b>
William Altfield	96.30%	0.00%	3.70%
Barbara Areces	90.91%	4.55%	4.55%
Ramiro C. Areces	91.30%	4.35%	4.35%
Jennifer Azar	30.77%	0.00%	69.23%
Marcus Bach Armas	84.21%	5.26%	10.53%
Michelle Alvarez Barakat	94.74%	0.00%	5.26%
Gina Beovides	97.06%	2.94%	0.00%
Scott M. Bernstein	87.50%	8.33%	4.17%
Tanya Brinkley	95.24%	0.00%	4.76%
Beatrice Butchko	80.77%	19.23%	0.00%

# 2024 CABA Judicial Poll

<b>Does this Candidate possess the appropriate character to sit as judge?</b>			
	<b>Yes</b>	<b>No</b>	<b>No Opinion</b>
Marcia B. Caballero	88.24%	0.00%	11.76%
Carmen Cabarga	66.67%	14.29%	19.05%
Donald "DJ" Cannava	95.00%	0.00%	5.00%
Betty Capote	90.00%	5.00%	5.00%
Yvonne Colodny	90.48%	0.00%	9.52%
Laura Shearon Cruz	85.00%	0.00%	15.00%
Raul Cuervo	77.78%	0.00%	22.22%
Ivonne Cuesta	82.61%	8.70%	8.70%
Jorge E. Cueto	84.00%	12.00%	4.00%
Abby Cynamon	92.00%	4.00%	4.00%
Miesha Darrough	80.00%	0.00%	20.00%
Lisette De La Rosa	64.29%	0.00%	35.71%
Marcia Del Rey	36.36%	50.00%	13.64%
Michelle Delancy	87.50%	0.00%	12.50%
Dawn Denaro	87.50%	6.25%	6.25%
Reemberto Diaz	95.83%	4.17%	0.00%
Veronica Diaz	66.67%	25.00%	8.33%
Christina Marie DiRaimondo	95.24%	0.00%	4.76%
Pedro P. Echarte Jr	70.83%	20.83%	8.33%
Spencer Eig	78.95%	15.79%	5.26%
Elisabeth Espinosa	82.35%	5.88%	11.76%
Robin Faber	81.25%	12.50%	6.25%
Marlene Fernandez- Karavetsos	83.33%	5.56%	11.11%
Victoria Ferrer	88.89%	0.00%	11.11%
Carlos Gamez	100.00%	0.00%	0.00%
Alicia Garcia Priovolos	76.47%	17.65%	5.88%
Stacy D. Glick	83.33%	11.11%	5.56%
Ritamaria Gonzalez Cuervo	85.71%	0.00%	14.29%
Laura Maria Gonzalez- Marques	78.57%	0.00%	21.43%
Michaelle Gonzalez- Paulson	94.44%	0.00%	5.56%
Carlos Guzman	91.30%	8.70%	0.00%
Ayana Harris	87.50%	0.00%	12.50%
Christine Hernandez	76.47%	0.00%	23.53%
Richard Hersch	85.71%	14.29%	0.00%
Milton Hirsch	73.91%	21.74%	4.35%
Chiaka Ihekwaba	90.00%	5.00%	5.00%
Zachary N. James	95.00%	0.00%	5.00%
Lody Jean	100.00%	0.00%	0.00%
Carroll J. Kelly	100.00%	0.00%	0.00%
Myriam Lehr	89.47%	5.26%	5.26%
Steve Leifman	100.00%	0.00%	0.00%
Peter R. Lopez	100.00%	0.00%	0.00%
Denise Martinez- Scanziani	72.73%	9.09%	18.18%
Linda Melendez	71.43%	0.00%	28.57%
Alberto Milian	88.24%	5.88%	5.88%
David C. Miller	60.87%	34.78%	4.35%
Cristina Miranda	88.24%	5.88%	5.88%
Natalie Moore	92.31%	0.00%	7.69%

# 2024 CABA Judicial Poll

Does this Candidate possess the appropriate character to sit as judge?			
	Yes	No	No Opinion
Spencer Multack	95.65%	0.00%	4.35%
Gordon Murray	100.00%	0.00%	0.00%
Julie H. Nelson	78.57%	7.14%	14.29%
Luis Perez- Medina	92.31%	0.00%	7.69%
Joseph Perkins	57.14%	21.43%	21.43%
Teresa Pooler	94.12%	0.00%	5.88%
Orlando A. Prescott	100.00%	0.00%	0.00%
Thomas J. Rebull	100.00%	0.00%	0.00%
Jason Reding Quiñones	23.08%	23.08%	53.85%
Cristina Rivera Correa	86.67%	6.67%	6.67%
Ariel Rodriguez	80.00%	6.67%	13.33%
Jose M. Rodriguez	91.67%	4.17%	4.17%
Oscar Rodriguez- Fonts	86.36%	4.55%	9.09%
Samantha Ruiz Cohen	100.00%	0.00%	0.00%
Mavel Ruiz	95.00%	5.00%	0.00%
Migna Sanchez- Llorens	90.00%	10.00%	0.00%
George A. Sarduy	83.33%	16.67%	0.00%
Stephanie Silver	89.47%	5.26%	5.26%
Bertila Soto	100.00%	0.00%	0.00%
Laura Anne Stuzin	90.48%	4.76%	4.76%
Daryl E. Trawick	88.24%	0.00%	11.76%
Robert T. Watson	95.45%	4.55%	0.00%
Andrea R. Wolfson	96.15%	0.00%	3.85%
David Young	80.77%	19.23%	0.00%
Angélica D. Zayas	88.24%	0.00%	11.76%

Preparedness for Hearing?				
	Exceptionally Qualified	Qualified	Unqualified	No Opinion
William Altfield	63.64%	22.73%	0.00%	13.64%
Barbara Areces	43.75%	43.75%	6.25%	6.25%
Ramiro C. Areces	52.94%	35.29%	0.00%	11.76%
Jennifer Azar	10.00%	30.00%	0.00%	60.00%
Marcus Bach Armas	46.67%	26.67%	6.67%	20.00%
Michelle Alvarez Barakat	56.25%	31.25%	0.00%	12.50%
Gina Beovides	85.71%	3.57%	7.14%	3.57%
Scott M. Bernstein	57.89%	21.05%	10.53%	10.53%
Tanya Brinkley	50.00%	37.50%	0.00%	12.50%
Beatrice Butchko	42.86%	33.33%	19.05%	4.76%
Marcia B. Caballero	50.00%	28.57%	0.00%	21.43%
Carmen Cabarga	31.25%	25.00%	12.50%	31.25%
Donald “DJ” Cannava	50.00%	35.71%	0.00%	14.29%
Betty Capote	40.00%	46.67%	6.67%	6.67%
Yvonne Colodny	46.67%	33.33%	0.00%	20.00%
Laura Shearon Cruz	46.15%	38.46%	0.00%	15.38%
Raul Cuervo	33.33%	25.00%	0.00%	41.67%
Ivonne Cuesta	50.00%	27.78%	11.11%	11.11%
Jorge E. Cueto	65.00%	20.00%	10.00%	5.00%
Abby Cynamon	60.00%	25.00%	0.00%	15.00%
Miesha Darrough	41.67%	25.00%	0.00%	33.33%

# 2024 CABA Judicial Poll

<b>Preparedness for Hearing?</b>				
	<b>Exceptionally Qualified</b>	<b>Qualified</b>	<b>Unqualified</b>	<b>No Opinion</b>
Lisette De La Rosa	27.27%	27.27%	0.00%	45.45%
Marcia Del Rey	22.22%	11.11%	50.00%	16.67%
Michelle Delancy	50.00%	25.00%	0.00%	25.00%
Dawn Denaro	45.45%	27.27%	9.09%	18.18%
Reemberto Diaz	73.68%	21.05%	5.26%	0.00%
Veronica Diaz	44.44%	27.78%	5.56%	22.22%
Christina Marie DiRaimondo	70.59%	17.65%	0.00%	11.76%
Pedro P. Echarte Jr	31.58%	36.84%	15.79%	15.79%
Spencer Eig	28.57%	35.71%	14.29%	21.43%
Elisabeth Espinosa	50.00%	25.00%	0.00%	25.00%
Robin Faber	27.27%	27.27%	18.18%	27.27%
Marlene Fernandez-Karavetsos	46.67%	26.67%	6.67%	20.00%
Victoria Ferrer	53.33%	33.33%	0.00%	13.33%
Carlos Gamez	71.43%	28.57%	0.00%	0.00%
Alicia Garcia Priovolos	38.46%	38.46%	15.38%	7.69%
Stacy D. Glick	53.85%	30.77%	0.00%	15.38%
Ritamaria Gonzalez Cuervo	22.22%	33.33%	0.00%	44.44%
Laura Maria Gonzalez- Marques	20.00%	40.00%	0.00%	40.00%
Michaelle Gonzalez- Paulson	58.33%	25.00%	0.00%	16.67%
Carlos Guzman	66.67%	22.22%	11.11%	0.00%
Ayana Harris	36.36%	36.36%	0.00%	27.27%
Christine Hernandez	41.67%	25.00%	0.00%	33.33%
Richard Hersch	56.25%	25.00%	6.25%	12.50%
Milton Hirsch	55.56%	16.67%	11.11%	16.67%
Chiaka Ihekwa	57.14%	14.29%	7.14%	21.43%
Zachary N. James	64.29%	14.29%	0.00%	21.43%
Lody Jean	71.43%	23.81%	0.00%	4.76%
Carroll J. Kelly	68.42%	21.05%	0.00%	10.53%
Myriam Lehr	73.33%	6.67%	6.67%	13.33%
Steve Leifman	64.71%	23.53%	0.00%	11.76%
Peter R. Lopez	73.68%	21.05%	0.00%	5.26%
Denise Martinez- Scanziani	50.00%	12.50%	6.25%	31.25%
Linda Melendez	36.36%	18.18%	0.00%	45.45%
Alberto Milian	58.33%	16.67%	0.00%	25.00%
David C. Miller	29.41%	29.41%	35.29%	5.88%
Cristina Miranda	53.85%	15.38%	7.69%	23.08%
Natalie Moore	44.44%	33.33%	0.00%	22.22%
Spencer Multack	62.50%	18.75%	0.00%	18.75%
Gordon Murray	50.00%	28.57%	0.00%	21.43%
Julie H. Nelson	30.00%	30.00%	10.00%	30.00%
Luis Perez- Medina	40.00%	30.00%	0.00%	30.00%
Joseph Perkins	0.00%	22.22%	33.33%	44.44%
Teresa Pooler	36.36%	27.27%	0.00%	36.36%
Orlando A. Prescott	64.29%	21.43%	0.00%	14.29%
Thomas J. Rebull	85.71%	9.52%	0.00%	4.76%
Jason Reding Quiñones	9.09%	9.09%	18.18%	63.64%
Cristina Rivera Correa	63.64%	9.09%	9.09%	18.18%
Ariel Rodriguez	41.67%	25.00%	8.33%	25.00%

# 2024 CABA Judicial Poll

<b>Preparedness for Hearing?</b>				
	<b>Exceptionally Qualified</b>	<b>Qualified</b>	<b>Unqualified</b>	<b>No Opinion</b>
Jose M. Rodriguez	63.16%	26.32%	5.26%	5.26%
Oscar Rodriguez- Fonts	46.67%	26.67%	6.67%	20.00%
Samantha Ruiz Cohen	71.43%	14.29%	0.00%	14.29%
Mavel Ruiz	46.15%	30.77%	0.00%	23.08%
Migna Sanchez- Llorens	33.33%	46.67%	6.67%	13.33%
George A. Sarduy	25.00%	31.25%	18.75%	25.00%
Stephanie Silver	62.50%	18.75%	6.25%	12.50%
Bertila Soto	86.21%	6.90%	0.00%	6.90%
Laura Anne Stuzin	62.50%	12.50%	6.25%	18.75%
Daryl E. Trawick	25.00%	50.00%	0.00%	25.00%
Robert T. Watson	61.11%	22.22%	5.56%	11.11%
Andrea R. Wolfson	68.18%	18.18%	0.00%	13.64%
David Young	60.87%	8.70%	17.39%	13.04%
Angélica D. Zayas	50.00%	35.71%	0.00%	14.29%
<b>Remote Court Operations?</b>				
	<b>Exceptionally Qualified</b>	<b>Qualified</b>	<b>Unqualified</b>	<b>No Opinion</b>
William Altfield	59.09%	22.73%	0.00%	18.18%
Barbara Areces	43.75%	43.75%	6.25%	6.25%
Ramiro C. Areces	52.94%	29.41%	5.88%	11.76%
Jennifer Azar	10.00%	30.00%	0.00%	60.00%
Marcus Bach Armas	46.67%	26.67%	0.00%	26.67%
Michelle Alvarez Barakat	56.25%	18.75%	6.25%	18.75%
Gina Beovides	78.57%	14.29%	3.57%	3.57%
Scott M. Bernstein	47.37%	26.32%	10.53%	15.79%
Tanya Brinkley	50.00%	37.50%	0.00%	12.50%
Beatrice Butchko	42.86%	38.10%	14.29%	4.76%
Marcia B. Caballero	50.00%	21.43%	0.00%	28.57%
Carmen Cabarga	31.25%	18.75%	12.50%	37.50%
Donald "DJ" Cannava	50.00%	35.71%	0.00%	14.29%
Betty Capote	26.67%	46.67%	6.67%	20.00%
Yvonne Colodny	50.00%	28.57%	0.00%	21.43%
Laura Shearon Cruz	46.15%	38.46%	0.00%	15.38%
Raul Cuervo	33.33%	25.00%	0.00%	41.67%
Ivonne Cuesta	50.00%	27.78%	11.11%	11.11%
Jorge E. Cueto	65.00%	20.00%	5.00%	10.00%
Abby Cynamon	60.00%	25.00%	0.00%	15.00%
Miesha Darrough	41.67%	25.00%	0.00%	33.33%
Lissette De La Rosa	27.27%	27.27%	0.00%	45.45%
Marcia Del Rey	22.22%	11.11%	50.00%	16.67%
Michelle Delancy	50.00%	25.00%	0.00%	25.00%
Dawn Denaro	45.45%	27.27%	9.09%	18.18%
Reemberto Diaz	73.68%	21.05%	5.26%	0.00%
Veronica Diaz	44.44%	27.78%	11.11%	16.67%
Christina Marie DiRaimondo	70.59%	17.65%	0.00%	11.76%
Pedro P. Echarte Jr	31.58%	36.84%	15.79%	15.79%
Spencer Eig	28.57%	42.86%	7.14%	21.43%
Elisabeth Espinosa	50.00%	25.00%	0.00%	25.00%

# 2024 CABA Judicial Poll

Remote Court Operations?				
	Exceptionally Qualified	Qualified	Unqualified	No Opinion
Robin Faber	27.27%	27.27%	18.18%	27.27%
Marlene Fernandez-Karavetsos	46.67%	26.67%	6.67%	20.00%
Victoria Ferrer	53.33%	26.67%	6.67%	13.33%
Carlos Gamez	71.43%	28.57%	0.00%	0.00%
Alicia Garcia Priovolos	46.15%	30.77%	15.38%	7.69%
Stacy D. Glick	46.15%	38.46%	0.00%	15.38%
Ritamaria Gonzalez Cuervo	22.22%	22.22%	0.00%	55.56%
Laura Maria Gonzalez- Marques	20.00%	30.00%	0.00%	50.00%
Michaelle Gonzalez- Paulson	58.33%	25.00%	0.00%	16.67%
Carlos Guzman	72.22%	22.22%	5.56%	0.00%
Ayana Harris	36.36%	36.36%	0.00%	27.27%
Christine Hernandez	41.67%	25.00%	0.00%	33.33%
Richard Hersch	56.25%	25.00%	6.25%	12.50%
Milton Hirsch	50.00%	16.67%	16.67%	16.67%
Chiaka Ihekwaba	57.14%	14.29%	7.14%	21.43%
Zachary N. James	64.29%	14.29%	0.00%	21.43%
Lody Jean	71.43%	23.81%	0.00%	4.76%
Carroll J. Kelly	68.42%	21.05%	0.00%	10.53%
Myriam Lehr	73.33%	13.33%	0.00%	13.33%
Steve Leifman	64.71%	23.53%	0.00%	11.76%
Peter R. Lopez	73.68%	21.05%	0.00%	5.26%
Denise Martinez- Scanziani	50.00%	12.50%	6.25%	31.25%
Linda Melendez	36.36%	18.18%	0.00%	45.45%
Alberto Milian	58.33%	8.33%	8.33%	25.00%
David C. Miller	29.41%	29.41%	35.29%	5.88%
Cristina Miranda	53.85%	15.38%	7.69%	23.08%
Natalie Moore	44.44%	33.33%	0.00%	22.22%
Spencer Multack	62.50%	18.75%	0.00%	18.75%
Gordon Murray	53.85%	23.08%	0.00%	23.08%
Julie H. Nelson	30.00%	30.00%	10.00%	30.00%
Luis Perez- Medina	40.00%	30.00%	0.00%	30.00%
Joseph Perkins	0.00%	22.22%	33.33%	44.44%
Teresa Pooler	27.27%	36.36%	0.00%	36.36%
Orlando A. Prescott	64.29%	21.43%	0.00%	14.29%
Thomas J. Rebull	80.95%	14.29%	0.00%	4.76%
Jason Reding Quiñones	9.09%	9.09%	18.18%	63.64%
Cristina Rivera Correa	54.55%	18.18%	9.09%	18.18%
Ariel Rodriguez	41.67%	25.00%	8.33%	25.00%
Jose M. Rodriguez	68.42%	26.32%	0.00%	5.26%
Oscar Rodriguez- Fonts	46.67%	33.33%	0.00%	20.00%
Samantha Ruiz Cohen	64.29%	21.43%	0.00%	14.29%
Mavel Ruiz	46.15%	30.77%	0.00%	23.08%
Migna Sanchez- Llorens	33.33%	40.00%	13.33%	13.33%
George A. Sarduy	25.00%	31.25%	18.75%	25.00%
Stephanie Silver	62.50%	18.75%	6.25%	12.50%
Bertila Soto	86.21%	6.90%	0.00%	6.90%
Laura Anne Stuzin	50.00%	18.75%	6.25%	25.00%
Daryl E. Trawick	25.00%	41.67%	0.00%	33.33%

# 2024 CABA Judicial Poll

<b>Remote Court Operations?</b>				
	<b>Exceptionally Qualified</b>	<b>Qualified</b>	<b>Unqualified</b>	<b>No Opinion</b>
Robert T. Watson	55.56%	27.78%	5.56%	11.11%
Andrea R. Wolfson	68.18%	18.18%	0.00%	13.64%
David Young	59.09%	9.09%	18.18%	13.64%
Angélica D. Zayas	50.00%	35.71%	0.00%	14.29%
<b>Case Management?</b>				
	<b>Exceptionally Qualified</b>	<b>Qualified</b>	<b>Unqualified</b>	<b>No Opinion</b>
William Altfeld	63.64%	22.73%	0.00%	13.64%
Barbara Areces	43.75%	43.75%	6.25%	6.25%
Ramiro C. Areces	58.82%	29.41%	0.00%	11.76%
Jennifer Azar	10.00%	30.00%	0.00%	60.00%
Marcus Bach Armas	40.00%	33.33%	0.00%	26.67%
Michelle Alvarez Barakat	50.00%	25.00%	6.25%	18.75%
Gina Beovides	85.71%	3.57%	7.14%	3.57%
Scott M. Bernstein	47.37%	26.32%	10.53%	15.79%
Tanya Brinkley	50.00%	37.50%	0.00%	12.50%
Beatrice Butchko	42.86%	33.33%	19.05%	4.76%
Marcia B. Caballero	42.86%	28.57%	0.00%	28.57%
Carmen Cabarga	31.25%	25.00%	12.50%	31.25%
Donald “DJ” Cannava	50.00%	35.71%	0.00%	14.29%
Betty Capote	26.67%	46.67%	6.67%	20.00%
Yvonne Colodny	42.86%	35.71%	0.00%	21.43%
Laura Shearon Cruz	46.15%	38.46%	0.00%	15.38%
Raul Cuervo	33.33%	25.00%	0.00%	41.67%
Ivonne Cuesta	47.06%	29.41%	11.76%	11.76%
Jorge E. Cueto	65.00%	15.00%	5.00%	15.00%
Abby Cynamon	60.00%	25.00%	0.00%	15.00%
Miesha Darrough	41.67%	25.00%	0.00%	33.33%
Lisette De La Rosa	27.27%	18.18%	0.00%	54.55%
Marcia Del Rey	22.22%	11.11%	50.00%	16.67%
Michelle Delancy	50.00%	25.00%	0.00%	25.00%
Dawn Denaro	45.45%	27.27%	9.09%	18.18%
Reemberto Diaz	73.68%	21.05%	5.26%	0.00%
Veronica Diaz	44.44%	27.78%	11.11%	16.67%
Christina Marie DiRaimondo	70.59%	17.65%	0.00%	11.76%
Pedro P. Echarte Jr	31.58%	36.84%	15.79%	15.79%
Spencer Eig	28.57%	42.86%	7.14%	21.43%
Elisabeth Espinosa	50.00%	25.00%	0.00%	25.00%
Robin Faber	27.27%	27.27%	18.18%	27.27%
Marlene Fernandez-Karavetsos	46.67%	26.67%	6.67%	20.00%
Victoria Ferrer	53.85%	30.77%	0.00%	15.38%
Carlos Gamez	71.43%	28.57%	0.00%	0.00%
Alicia Garcia Priovolos	38.46%	38.46%	15.38%	7.69%
Stacy D. Glick	46.15%	38.46%	0.00%	15.38%
Ritamaria Gonzalez Cuervo	22.22%	33.33%	0.00%	44.44%
Laura Maria Gonzalez- Marques	20.00%	30.00%	0.00%	50.00%
Michaelle Gonzalez- Paulson	58.33%	25.00%	0.00%	16.67%
Carlos Guzman	66.67%	22.22%	11.11%	0.00%

# HUNTON ANDREWS KURTH

PROUD SUPPORTER OF THE  
**CABA Judicial Forum**

©2024 Hunton Andrews Kurth LLP | HuntonAK.com

**EPGD**  
BUSINESS LAW®

We are proud to support the  
**Cuban American Bar Association**  
and its outstanding leadership.

## PRACTICE AREAS



TRADEMARKS &  
COPYRIGHTS



CORPORATE &  
CONTRACTS



CIVIL & COMMERCIAL  
LITIGATION



LABOR &  
EMPLOYMENT



REAL  
ESTATE



WILLS, TRUSTS  
& ESTATES



**Serving South Florida since 2013.**

786.837.6787

[www.epgdllp.com](http://www.epgdllp.com)

777 SW 37th Ave Suite 510, Miami, FL 33135



# 2024 CABA Judicial Poll

<b>Case Management?</b>				
	<b>Exceptionally Qualified</b>	<b>Qualified</b>	<b>Unqualified</b>	<b>No Opinion</b>
Ayana Harris	36.36%	36.36%	0.00%	27.27%
Christine Hernandez	41.67%	25.00%	0.00%	33.33%
Richard Hersch	56.25%	25.00%	6.25%	12.50%
Milton Hirsch	50.00%	22.22%	11.11%	16.67%
Chiaka Ihekweba	61.54%	15.38%	0.00%	23.08%
Zachary N. James	64.29%	14.29%	0.00%	21.43%
Lody Jean	66.67%	28.57%	0.00%	4.76%
Carroll J. Kelly	68.42%	21.05%	0.00%	10.53%
Myriam Lehr	73.33%	13.33%	0.00%	13.33%
Steve Leifman	64.71%	23.53%	0.00%	11.76%
Peter R. Lopez	73.68%	21.05%	0.00%	5.26%
Denise Martinez- Scanziani	50.00%	12.50%	6.25%	31.25%
Linda Melendez	36.36%	18.18%	0.00%	45.45%
Alberto Milian	53.85%	7.69%	7.69%	30.77%
David C. Miller	35.29%	29.41%	29.41%	5.88%
Cristina Miranda	53.85%	15.38%	7.69%	23.08%
Natalie Moore	44.44%	33.33%	0.00%	22.22%
Spencer Multack	62.50%	18.75%	0.00%	18.75%
Gordon Murray	53.85%	23.08%	0.00%	23.08%
Julie H. Nelson	30.00%	30.00%	10.00%	30.00%
Luis Perez- Medina	40.00%	30.00%	0.00%	30.00%
Joseph Perkins	0.00%	11.11%	44.44%	44.44%
Teresa Pooler	36.36%	27.27%	0.00%	36.36%
Orlando A. Prescott	64.29%	21.43%	0.00%	14.29%
Thomas J. Rebull	76.19%	19.05%	0.00%	4.76%
Jason Reding Quiñones	9.09%	9.09%	18.18%	63.64%
Cristina Rivera Correa	54.55%	18.18%	9.09%	18.18%
Ariel Rodriguez	41.67%	25.00%	16.67%	16.67%
Jose M. Rodriguez	57.89%	36.84%	0.00%	5.26%
Oscar Rodriguez- Fonts	46.67%	20.00%	13.33%	20.00%
Samantha Ruiz Cohen	71.43%	14.29%	0.00%	14.29%
Mavel Ruiz	46.15%	30.77%	0.00%	23.08%
Migna Sanchez- Llorens	40.00%	33.33%	13.33%	13.33%
George A. Sarduy	25.00%	31.25%	18.75%	25.00%
Stephanie Silver	62.50%	18.75%	6.25%	12.50%
Bertila Soto	86.21%	6.90%	0.00%	6.90%
Laura Anne Stuzin	50.00%	18.75%	6.25%	25.00%
Daryl E. Trawick	25.00%	41.67%	0.00%	33.33%
Robert T. Watson	61.11%	22.22%	5.56%	11.11%
Andrea R. Wolfson	68.18%	18.18%	0.00%	13.64%
David Young	59.09%	9.09%	18.18%	13.64%
Angélica D. Zayas	50.00%	35.71%	0.00%	14.29%
<b>Hearing Availability?</b>				
	<b>Exceptionally Qualified</b>	<b>Qualified</b>	<b>Unqualified</b>	<b>No Opinion</b>
William Altfield	63.64%	22.73%	0.00%	13.64%
Barbara Areces	43.75%	43.75%	6.25%	6.25%
Ramiro C. Areces	52.94%	35.29%	0.00%	11.76%
Jennifer Azar	10.00%	30.00%	0.00%	60.00%

# 2024 CABA Judicial Poll

Hearing Availability?				
	Exceptionally Qualified	Qualified	Unqualified	No Opinion
Marcus Bach Armas	46.67%	33.33%	0.00%	20.00%
Michelle Alvarez Barakat	50.00%	25.00%	6.25%	18.75%
Gina Beovides	78.57%	10.71%	7.14%	3.57%
Scott M. Bernstein	47.37%	26.32%	10.53%	15.79%
Tanya Brinkley	50.00%	37.50%	0.00%	12.50%
Beatrice Butchko	42.86%	33.33%	14.29%	9.52%
Marcia B. Caballero	42.86%	28.57%	0.00%	28.57%
Carmen Cabarga	31.25%	18.75%	12.50%	37.50%
Donald "DJ" Cannava	50.00%	35.71%	0.00%	14.29%
Betty Capote	26.67%	46.67%	6.67%	20.00%
Yvonne Colodny	46.67%	26.67%	6.67%	20.00%
Laura Shearon Cruz	46.15%	38.46%	0.00%	15.38%
Raul Cuervo	33.33%	25.00%	0.00%	41.67%
Ivonne Cuesta	47.06%	35.29%	5.88%	11.76%
Jorge E. Cueto	65.00%	15.00%	5.00%	15.00%
Abby Cynamon	65.00%	20.00%	0.00%	15.00%
Miesha Darrough	41.67%	25.00%	0.00%	33.33%
Lisette De La Rosa	27.27%	18.18%	0.00%	54.55%
Marcia Del Rey	22.22%	11.11%	50.00%	16.67%
Michelle Delancy	50.00%	25.00%	0.00%	25.00%
Dawn Denaro	45.45%	27.27%	9.09%	18.18%
Reemberto Diaz	73.68%	21.05%	5.26%	0.00%
Veronica Diaz	44.44%	22.22%	16.67%	16.67%
Christina Marie DiRaimondo	70.59%	17.65%	0.00%	11.76%
Pedro P. Echarte Jr	31.58%	36.84%	15.79%	15.79%
Spencer Eig	28.57%	42.86%	7.14%	21.43%
Elisabeth Espinosa	50.00%	25.00%	0.00%	25.00%
Robin Faber	30.00%	30.00%	10.00%	30.00%
Marlene Fernandez-Karavetsos	46.67%	26.67%	6.67%	20.00%
Victoria Ferrer	53.85%	30.77%	0.00%	15.38%
Carlos Gamez	71.43%	28.57%	0.00%	0.00%
Alicia Garcia Priovolos	38.46%	30.77%	23.08%	7.69%
Stacy D. Glick	46.15%	38.46%	0.00%	15.38%
Ritamaria Gonzalez Cuervo	22.22%	33.33%	0.00%	44.44%
Laura Maria Gonzalez- Marques	20.00%	30.00%	0.00%	50.00%
Michaelle Gonzalez- Paulson	58.33%	25.00%	0.00%	16.67%
Carlos Guzman	66.67%	22.22%	11.11%	0.00%
Ayana Harris	36.36%	36.36%	0.00%	27.27%
Christine Hernandez	41.67%	25.00%	0.00%	33.33%
Richard Hersch	56.25%	25.00%	6.25%	12.50%
Milton Hirsch	50.00%	22.22%	11.11%	16.67%
Chiaka Ihekwaba	61.54%	15.38%	0.00%	23.08%
Zachary N. James	64.29%	14.29%	0.00%	21.43%
Lody Jean	71.43%	23.81%	0.00%	4.76%
Carroll J. Kelly	68.42%	21.05%	0.00%	10.53%
Myriam Lehr	73.33%	13.33%	0.00%	13.33%
Steve Leifman	64.71%	23.53%	0.00%	11.76%
Peter R. Lopez	73.68%	21.05%	0.00%	5.26%

# 2024 CABA Judicial Poll

<b>Hearing Availability?</b>				
	<b>Exceptionally Qualified</b>	<b>Qualified</b>	<b>Unqualified</b>	<b>No Opinion</b>
Denise Martinez- Scanziani	53.33%	13.33%	6.67%	26.67%
Linda Melendez	36.36%	18.18%	0.00%	45.45%
Alberto Milian	58.33%	8.33%	8.33%	25.00%
David C. Miller	35.29%	29.41%	29.41%	5.88%
Cristina Miranda	53.85%	15.38%	7.69%	23.08%
Natalie Moore	44.44%	33.33%	0.00%	22.22%
Spencer Multack	62.50%	18.75%	0.00%	18.75%
Gordon Murray	53.85%	23.08%	0.00%	23.08%
Julie H. Nelson	30.00%	30.00%	10.00%	30.00%
Luis Perez- Medina	40.00%	30.00%	0.00%	30.00%
Joseph Perkins	0.00%	22.22%	33.33%	44.44%
Teresa Pooler	36.36%	27.27%	0.00%	36.36%
Orlando A. Prescott	64.29%	21.43%	0.00%	14.29%
Thomas J. Rebull	76.19%	14.29%	4.76%	4.76%
Jason Reding Quiñones	9.09%	9.09%	18.18%	63.64%
Cristina Rivera Correa	54.55%	18.18%	9.09%	18.18%
Ariel Rodriguez	41.67%	25.00%	8.33%	25.00%
Jose M. Rodriguez	63.16%	31.58%	0.00%	5.26%
Oscar Rodriguez- Fonts	46.67%	26.67%	6.67%	20.00%
Samantha Ruiz Cohen	64.29%	21.43%	0.00%	14.29%
Mavel Ruiz	46.15%	30.77%	0.00%	23.08%
Migna Sanchez- Llorens	33.33%	40.00%	13.33%	13.33%
George A. Sarduy	25.00%	31.25%	18.75%	25.00%
Stephanie Silver	62.50%	18.75%	6.25%	12.50%
Bertila Soto	86.21%	6.90%	0.00%	6.90%
Laura Anne Stuzin	50.00%	18.75%	6.25%	25.00%
Daryl E. Trawick	25.00%	41.67%	0.00%	33.33%
Robert T. Watson	55.56%	27.78%	5.56%	11.11%
Andrea R. Wolfson	68.18%	18.18%	0.00%	13.64%
David Young	54.55%	13.64%	18.18%	13.64%
Angélica D. Zayas	50.00%	35.71%	0.00%	14.29%
<b>Timeliness of Rulings?</b>				
	<b>Exceptionally Qualified</b>	<b>Qualified</b>	<b>Unqualified</b>	<b>No Opinion</b>
William Altfield	60.00%	20.00%	5.00%	15.00%
Barbara Areces	40.00%	46.67%	6.67%	6.67%
Ramiro C. Areces	46.67%	40.00%	0.00%	13.33%
Jennifer Azar	0.00%	33.33%	0.00%	66.67%
Marcus Bach Armas	30.00%	50.00%	0.00%	20.00%
Michelle Alvarez Barakat	46.67%	20.00%	13.33%	20.00%
Gina Beovides	76.92%	11.54%	7.69%	3.85%
Scott M. Bernstein	55.56%	27.78%	5.56%	11.11%
Tanya Brinkley	42.86%	42.86%	0.00%	14.29%
Beatrice Butchko	40.00%	30.00%	25.00%	5.00%
Marcia B. Caballero	38.46%	30.77%	0.00%	30.77%
Carmen Cabarga	28.57%	28.57%	14.29%	28.57%
Donald “DJ” Cannava	46.15%	38.46%	0.00%	15.38%
Betty Capote	21.43%	50.00%	7.14%	21.43%
Yvonne Colodny	42.86%	28.57%	7.14%	21.43%

# 2024 CABA Judicial Poll

Timeliness of Rulings?				
	Exceptionally Qualified	Qualified	Unqualified	No Opinion
Laura Shearon Cruz	41.67%	41.67%	0.00%	16.67%
Raul Cuervo	27.27%	27.27%	0.00%	45.45%
Ivonne Cuesta	43.75%	31.25%	12.50%	12.50%
Jorge E. Cueto	68.42%	15.79%	5.26%	10.53%
Abby Cynamon	63.16%	21.05%	0.00%	15.79%
Miesha Darrough	36.36%	27.27%	0.00%	36.36%
Lissette De La Rosa	20.00%	20.00%	0.00%	60.00%
Marcia Del Rey	23.53%	11.76%	47.06%	17.65%
Michelle Delancy	45.45%	27.27%	0.00%	27.27%
Dawn Denaro	50.00%	40.00%	0.00%	10.00%
Reemberto Diaz	77.78%	22.22%	0.00%	0.00%
Veronica Diaz	50.00%	31.25%	6.25%	12.50%
Christina Marie DiRaimondo	80.00%	13.33%	0.00%	6.67%
Pedro P. Echarte Jr	31.25%	37.50%	18.75%	12.50%
Spencer Eig	25.00%	50.00%	8.33%	16.67%
Elisabeth Espinosa	50.00%	30.00%	0.00%	20.00%
Robin Faber	22.22%	33.33%	11.11%	33.33%
Marlene Fernandez-Karavetsos	50.00%	28.57%	7.14%	14.29%
Victoria Ferrer	50.00%	33.33%	0.00%	16.67%
Carlos Gamez	61.54%	38.46%	0.00%	0.00%
Alicia Garcia Priovolos	41.67%	33.33%	16.67%	8.33%
Stacy D. Glick	50.00%	41.67%	0.00%	8.33%
Ritamaria Gonzalez Cuervo	28.57%	28.57%	0.00%	42.86%
Laura Maria Gonzalez- Marques	12.50%	37.50%	0.00%	50.00%
Michaelle Gonzalez- Paulson	54.55%	27.27%	0.00%	18.18%
Carlos Guzman	66.67%	26.67%	6.67%	0.00%
Ayana Harris	33.33%	44.44%	0.00%	22.22%
Christine Hernandez	50.00%	30.00%	0.00%	20.00%
Richard Hersch	50.00%	28.57%	7.14%	14.29%
Milton Hirsch	58.82%	17.65%	5.88%	17.65%
Chiaka Ihekweba	54.55%	18.18%	0.00%	27.27%
Zachary N. James	66.67%	16.67%	0.00%	16.67%
Lody Jean	70.00%	25.00%	0.00%	5.00%
Carroll J. Kelly	61.11%	27.78%	0.00%	11.11%
Myriam Lehr	71.43%	14.29%	0.00%	14.29%
Steve Leifman	62.50%	25.00%	0.00%	12.50%
Peter R. Lopez	72.22%	22.22%	0.00%	5.56%
Denise Martinez- Scanziani	57.14%	14.29%	7.14%	21.43%
Linda Melendez	30.00%	20.00%	0.00%	50.00%
Alberto Milian	54.55%	18.18%	0.00%	27.27%
David C. Miller	25.00%	37.50%	31.25%	6.25%
Cristina Miranda	50.00%	16.67%	8.33%	25.00%
Natalie Moore	28.57%	42.86%	0.00%	28.57%
Spencer Multack	60.00%	20.00%	0.00%	20.00%
Gordon Murray	58.33%	16.67%	0.00%	25.00%
Julie H. Nelson	22.22%	33.33%	11.11%	33.33%
Luis Perez- Medina	33.33%	33.33%	0.00%	33.33%
Joseph Perkins	0.00%	25.00%	37.50%	37.50%

# 2024 CABA Judicial Poll

<b>Timeliness of Rulings?</b>				
	<b>Exceptionally Qualified</b>	<b>Qualified</b>	<b>Unqualified</b>	<b>No Opinion</b>
Teresa Pooler	30.00%	30.00%	0.00%	40.00%
Orlando A. Prescott	58.33%	25.00%	0.00%	16.67%
Thomas J. Rebull	75.00%	15.00%	0.00%	10.00%
Jason Reding Quiñones	11.11%	33.33%	11.11%	44.44%
Cristina Rivera Correa	44.44%	22.22%	11.11%	22.22%
Ariel Rodriguez	45.45%	18.18%	9.09%	27.27%
Jose M. Rodriguez	66.67%	27.78%	0.00%	5.56%
Oscar Rodriguez- Fonts	50.00%	14.29%	14.29%	21.43%
Samantha Ruiz Cohen	63.64%	18.18%	0.00%	18.18%
Mavel Ruiz	45.45%	27.27%	0.00%	27.27%
Migna Sanchez- Llorens	35.71%	35.71%	14.29%	14.29%
George A. Sarduy	21.43%	35.71%	14.29%	28.57%
Stephanie Silver	61.54%	15.38%	7.69%	15.38%
Bertila Soto	84.62%	7.69%	0.00%	7.69%
Laura Anne Stuzin	50.00%	21.43%	7.14%	21.43%
Daryl E. Trawick	18.18%	45.45%	0.00%	36.36%
Robert T. Watson	58.82%	23.53%	5.88%	11.76%
Andrea R. Wolfson	66.67%	19.05%	0.00%	14.29%
David Young	57.14%	14.29%	14.29%	14.29%
Angélica D. Zayas	53.85%	38.46%	0.00%	7.69%

<b>Does the Candidate treat Hispanics fairly and equitably?</b>			
	<b>Yes</b>	<b>No</b>	<b>No Opinion</b>
William Altfeld	89.47%	0.00%	10.53%
Barbara Areces	100.00%	0.00%	0.00%
Ramiro C. Areces	100.00%	0.00%	0.00%
Jennifer Azar	55.56%	0.00%	44.44%
Marcus Bach Armas	80.00%	0.00%	20.00%
Michelle Alvarez Barakat	92.86%	0.00%	7.14%
Gina Beovides	92.00%	8.00%	0.00%
Scott M. Bernstein	88.24%	11.76%	0.00%
Tanya Brinkley	92.31%	0.00%	7.69%
Beatrice Butchko	100.00%	0.00%	0.00%
Marcia B. Caballero	84.62%	0.00%	15.38%
Carmen Cabarga	71.43%	0.00%	28.57%
Donald “DJ” Cannava	92.31%	0.00%	7.69%
Betty Capote	85.71%	7.14%	7.14%
Yvonne Colodny	92.31%	0.00%	7.69%
Laura Shearon Cruz	90.91%	0.00%	9.09%
Raul Cuervo	72.73%	0.00%	27.27%
Ivonne Cuesta	80.00%	13.33%	6.67%
Jorge E. Cueto	88.24%	0.00%	11.76%
Abby Cynamon	94.74%	0.00%	5.26%
Miesha Darrough	81.82%	0.00%	18.18%
Lissette De La Rosa	60.00%	0.00%	40.00%
Marcia Del Rey	47.06%	29.41%	23.53%
Michelle Delancy	91.67%	0.00%	8.33%
Dawn Denaro	100.00%	0.00%	0.00%
Reemberto Diaz	100.00%	0.00%	0.00%

# 2024 CABA Judicial Poll

Does the Candidate treat Hispanics fairly and equitably?			
	Yes	No	No Opinion
Veronica Diaz	86.67%	6.67%	6.67%
Christina Marie DiRaimondo	100.00%	0.00%	0.00%
Pedro P. Echarte Jr	75.00%	12.50%	12.50%
Spencer Eig	91.67%	0.00%	8.33%
Elisabeth Espinosa	90.00%	0.00%	10.00%
Robin Faber	80.00%	0.00%	20.00%
Marlene Fernandez- Karavetsos	86.67%	6.67%	6.67%
Victoria Ferrer	92.31%	0.00%	7.69%
Carlos Gamez	100.00%	0.00%	0.00%
Alicia Garcia Priovolos	83.33%	16.67%	0.00%
Stacy D. Glick	100.00%	0.00%	0.00%
Ritamaria Gonzalez Cuervo	87.50%	0.00%	12.50%
Laura Maria Gonzalez- Marques	77.78%	0.00%	22.22%
Michaelle Gonzalez- Paulson	91.67%	0.00%	8.33%
Carlos Guzman	93.75%	0.00%	6.25%
Ayana Harris	100.00%	0.00%	0.00%
Christine Hernandez	100.00%	0.00%	0.00%
Richard Hersch	85.71%	14.29%	0.00%
Milton Hirsch	88.24%	11.76%	0.00%
Chiaka Ihekweba	100.00%	0.00%	0.00%
Zachary N. James	100.00%	0.00%	0.00%
Lody Jean	100.00%	0.00%	0.00%
Carroll J. Kelly	100.00%	0.00%	0.00%
Myriam Lehr	92.86%	0.00%	7.14%
Steve Leifman	100.00%	0.00%	0.00%
Peter R. Lopez	100.00%	0.00%	0.00%
Denise Martinez- Scanziani	86.67%	0.00%	13.33%
Linda Melendez	81.82%	0.00%	18.18%
Alberto Milian	91.67%	0.00%	8.33%
David C. Miller	68.75%	25.00%	6.25%
Cristina Miranda	84.62%	7.69%	7.69%
Natalie Moore	87.50%	0.00%	12.50%
Spencer Multack	93.75%	0.00%	6.25%
Gordon Murray	92.31%	0.00%	7.69%
Julie H. Nelson	80.00%	10.00%	10.00%
Luis Perez- Medina	100.00%	0.00%	0.00%
Joseph Perkins	77.78%	11.11%	11.11%
Teresa Pooler	90.00%	10.00%	0.00%
Orlando A. Prescott	100.00%	0.00%	0.00%
Thomas J. Rebull	94.74%	0.00%	5.26%
Jason Reding Quiñones	40.00%	10.00%	50.00%
Cristina Rivera Correa	80.00%	10.00%	10.00%
Ariel Rodriguez	83.33%	0.00%	16.67%
Jose M. Rodriguez	94.12%	0.00%	5.88%
Oscar Rodriguez- Fonts	93.33%	0.00%	6.67%
Samantha Ruiz Cohen	91.67%	8.33%	0.00%
Mavel Ruiz	100.00%	0.00%	0.00%

# 2024 CABA Judicial Poll

<b>Does the Candidate treat Hispanics fairly and equitably?</b>			
	<b>Yes</b>	<b>No</b>	<b>No Opinion</b>
Migna Sanchez- Llorens	86.67%	13.33%	0.00%
George A. Sarduy	78.57%	21.43%	0.00%
Stephanie Silver	85.71%	0.00%	14.29%
Bertila Soto	100.00%	0.00%	0.00%
Laura Anne Stuzin	85.71%	7.14%	7.14%
Daryl E. Trawick	90.91%	0.00%	9.09%
Robert T. Watson	94.44%	0.00%	5.56%
Andrea R. Wolfson	95.45%	4.55%	0.00%
David Young	80.95%	14.29%	4.76%
Angélica D. Zayas	92.86%	7.14%	0.00%
<b>Treats everyone equitably regardless of race, ethnicity, gender, religion, or sexual orientation?</b>			
	<b>Yes</b>	<b>No</b>	<b>No Opinion</b>
William Altfield	89.47%	0.00%	10.53%
Barbara Areces	100.00%	0.00%	0.00%
Ramiro C. Areces	100.00%	0.00%	0.00%
Jennifer Azar	55.56%	0.00%	44.44%
Marcus Bach Armas	80.00%	0.00%	20.00%
Michelle Alvarez Barakat	92.86%	0.00%	7.14%
Gina Beovides	92.00%	8.00%	0.00%
Scott M. Bernstein	88.89%	5.56%	5.56%
Tanya Brinkley	92.31%	0.00%	7.69%
Beatrice Butchko	94.44%	5.56%	0.00%
Marcia B. Caballero	84.62%	0.00%	15.38%
Carmen Cabarga	71.43%	0.00%	28.57%
Donald “DJ” Cannava	92.31%	0.00%	7.69%
Betty Capote	85.71%	7.14%	7.14%
Yvonne Colodny	92.31%	0.00%	7.69%
Laura Shearon Cruz	90.91%	0.00%	9.09%
Raul Cuervo	72.73%	0.00%	27.27%
Ivonne Cuesta	80.00%	13.33%	6.67%
Jorge E. Cueto	88.24%	0.00%	11.76%
Abby Cynamon	94.74%	0.00%	5.26%
Miesha Darrough	81.82%	0.00%	18.18%
Lissette De La Rosa	60.00%	0.00%	40.00%
Marcia Del Rey	47.06%	29.41%	23.53%
Michelle Delancy	91.67%	0.00%	8.33%
Dawn Denaro	100.00%	0.00%	0.00%
Reemberto Diaz	100.00%	0.00%	0.00%
Reemberto Diaz	86.67%	6.67%	6.67%
Veronica Diaz	100.00%	0.00%	0.00%
Christina Marie DiRaimondo	75.00%	12.50%	12.50%
Pedro P. Echarte Jr	91.67%	0.00%	8.33%
Spencer Eig	90.00%	0.00%	10.00%
Elisabeth Espinosa	80.00%	0.00%	20.00%
Robin Faber	86.67%	6.67%	6.67%
Marlene Fernandez- Karavetsos	92.31%	0.00%	7.69%
Victoria Ferrer	100.00%	0.00%	0.00%

# 2024 CABA Judicial Poll

Treats everyone equitably regardless of race, ethnicity, gender, religion, or sexual orientation?			
	Yes	No	No Opinion
Carlos Gamez	83.33%	16.67%	0.00%
Alicia Garcia Priovolos	100.00%	0.00%	0.00%
Stacy D. Glick	87.50%	0.00%	12.50%
Ritamaria Gonzalez Cuervo	77.78%	0.00%	22.22%
Laura Maria Gonzalez- Marques	91.67%	0.00%	8.33%
Michaelle Gonzalez- Paulson	93.75%	0.00%	6.25%
Carlos Guzman	100.00%	0.00%	0.00%
Ayana Harris	100.00%	0.00%	0.00%
Christine Hernandez	85.71%	14.29%	0.00%
Richard Hersch	88.24%	11.76%	0.00%
Milton Hirsch	100.00%	0.00%	0.00%
Chiaka Ihekweba	100.00%	0.00%	0.00%
Zachary N. James	100.00%	0.00%	0.00%
Lody Jean	100.00%	0.00%	0.00%
Carroll J. Kelly	92.86%	0.00%	7.14%
Myriam Lehr	100.00%	0.00%	0.00%
Steve Leifman	100.00%	0.00%	0.00%
Peter R. Lopez	86.67%	0.00%	13.33%
Denise Martinez- Scanziani	81.82%	0.00%	18.18%
Linda Melendez	91.67%	0.00%	8.33%
Alberto Milian	68.75%	18.75%	12.50%
David C. Miller	84.62%	7.69%	7.69%
Cristina Miranda	87.50%	0.00%	12.50%
Natalie Moore	93.75%	0.00%	6.25%
Spencer Multack	92.31%	0.00%	7.69%
Gordon Murray	80.00%	10.00%	10.00%
Julie H. Nelson	100.00%	0.00%	0.00%
Luis Perez- Medina	77.78%	11.11%	11.11%
Joseph Perkins	90.00%	10.00%	0.00%
Teresa Pooler	100.00%	0.00%	0.00%
Orlando A. Prescott	94.44%	0.00%	5.56%
Thomas J. Rebull	50.00%	0.00%	50.00%
Jason Reding Quiñones	80.00%	10.00%	10.00%
Cristina Rivera Correa	83.33%	0.00%	16.67%
Ariel Rodriguez	94.12%	0.00%	5.88%
Jose M. Rodriguez	93.33%	0.00%	6.67%
Oscar Rodriguez- Fonts	91.67%	8.33%	0.00%
Samantha Ruiz Cohen	100.00%	0.00%	0.00%
Mavel Ruiz	86.67%	13.33%	0.00%
Migna Sanchez- Llorens	78.57%	21.43%	0.00%
George A. Sarduy	85.71%	0.00%	14.29%
Stephanie Silver	100.00%	0.00%	0.00%
Bertila Soto	86.67%	6.67%	6.67%
Laura Anne Stuzin	90.91%	0.00%	9.09%
Daryl E. Trawick	94.44%	0.00%	5.56%
Robert T. Watson	100.00%	0.00%	0.00%
Andrea R. Wolfson	80.95%	14.29%	4.76%
David Young	92.86%	7.14%	0.00%
Angélica D. Zayas	88.24%	0.00%	11.76%



Our firm is proud to support the

## **CUBAN AMERICAN BAR ASSOCIATION**

---

Congratulations to CABA Co-Vice President, Haydee Sera, for co-chairing a successful 2024 Judicial Forum & Luncheon.

We are also proud to recognize CABA Secretary, Candice Balmori, and Roger Pou, who was selected as a Fellow in CABA's L.E.A.D. program.



**Haydee Sera**  
Co-Vice President



**Candice Balmori**  
Secretary



**Roger Pou**  
L.E.A.D. Fellow

[WWW.WSH-LAW.COM](http://WWW.WSH-LAW.COM)



Continental is pleased to sponsor the

## **Cuban American Bar Association's 2024 Judicial Forum & Luncheon**

Continental emphatically supports an independent judiciary that understands that its province and duty is to say what the law is, not what it should be. We are proud advocates for the cause of freedom and democracy in Cuba and the United States.



**CONTINENTAL**  
ATTORNEYS-AT-LAW

Miami | Tallahassee | Washington, D.C. | Buenos Aires (Satellite Office)

[www.continentalpllc.com](http://www.continentalpllc.com) | (305) 677-2707

